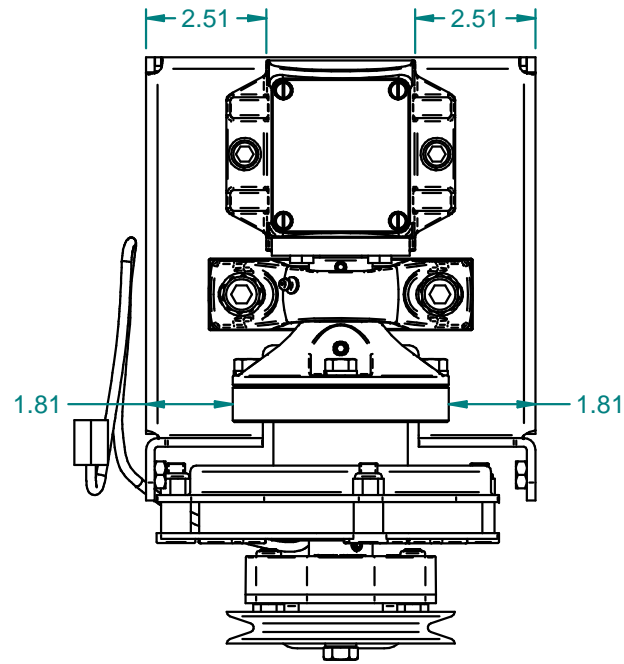
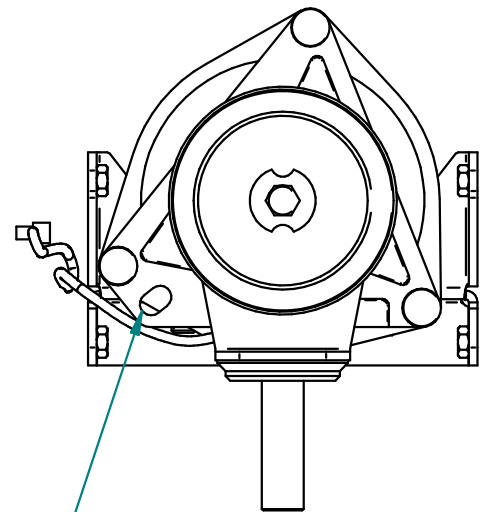


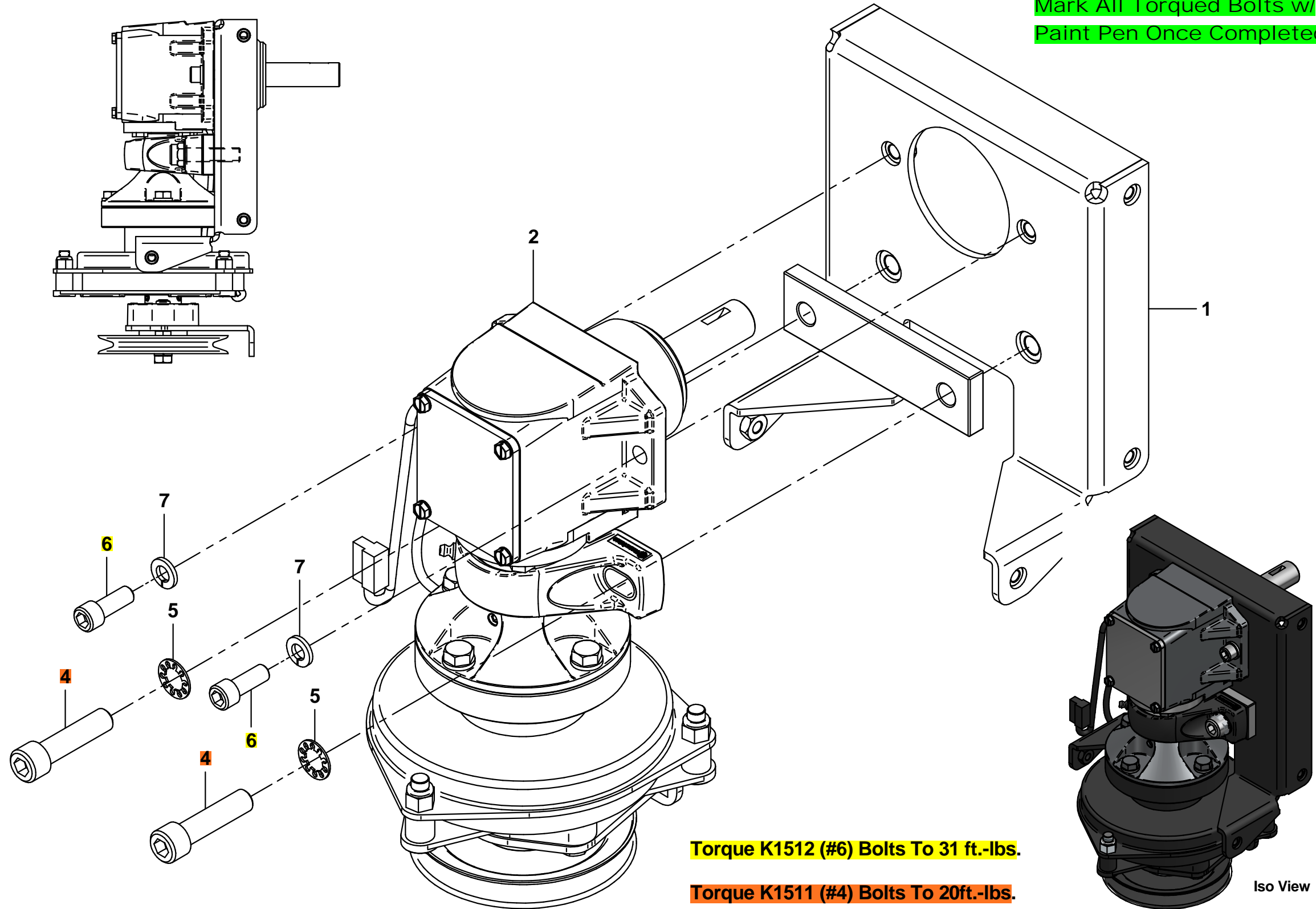
Mark All Torqued Bolts w/  
Paint Pen Once Completed



Bolt Drive Assembly  
Parallel To Drive Mnt.  
Assembly.



Before Assembling  
Drive Assy #8,  
Turn Clutch To Align  
Anti-Rotation Bolt As  
Shown



Torque K1512 (#6) Bolts To 31 ft.-lbs.

Torque K1511 (#4) Bolts To 20ft.-lbs.

Iso View

Item #	Part #	Desc.	Qty.
1	A2034	Drive Mnt Assy	1
2	A2057_02	Drive Assy	1
3*	B0940	Spacer Plate	1
4	K1511	SHCS 1/2"-13 x 2" A574 Zinc	2
5	K0057	Lock Washer I/T 1/2" / Zinc	2
6	K1512	SHCS 3/8"-16 x 1" A574 Zinc	2
7	K0048	Lock Washer 3/8"	2
8*	K1234	HHCS 1/2"-13 x 2"	1

Rev:	Next Rt: Assy	Part Inspection	Origin:	#: A2060_02
	Rt: Oper:	1st Last Yield	Req'd: 1	
	1 Assemble		Mtl:	Desc: Mounted Drive Assy
	2 *		Used On: A2039_03	Date: 9/9/2021 CP#: N/A
	3 *		Project: PTO-X	Rev: 1 Status: 0
	4 *		*	Weight: 35.808 lbm
Loc:	5 *		Units Inch / Tolerance Unless Otherwise Specified	Drawn By: Xengkeng
Sheet 1 of 1	6 *		Angles ±0.5° / 1 PI ±0.03 / 2 PI ±0.015 / 3 PI ±0.005	Appr By: <b>PECO Arden, NC</b>