



ZT-3000 & ZT-3001

**TRIM AND EDGE WITHOUT
LEAVING YOUR SEAT**



OPERATOR'S MANUAL

ASSEMBLY • OPERATION • MAINTENANCE

GRASS COLLECTION SYSTEM

TABLE OF CONTENTS

SECTION	PAGE	SECTION	PAGE
Safety - - - - -	2	IV Operating Instructions - - - - -	11
Safety Alert Symbols - - - - -	3	Trimming - - - - -	11-12
Warranty - - - - -	4	Edging - - - - -	12
I Introduction - - - - -	5	V Height Adjustment - - - - -	12
II Installation For Use - - - - -	6	VI Trimmer Line - - - - -	13
Pivot Block Assembly Installation - - - - -	6	VII Debris Guard Installation - - - - -	13
Upper & Lower Handle Assembly - - - - -	7	VIII Tips & Recommendations - - - - -	14
Lower Handle Assembly Installation - - - - -	7	Exploded Views & Parts Lists - - - - -	15-17
Swing Arm Installation - - - - -	8	Z-Trimmer Wiring Kit - - - - -	18
Motor & Trimmer Head Installation - - - - -	9	Overall Parts Lists - - - - -	19-20
Motor Mount Pivot Installation - - - - -	10	Safety Decals - - - - -	21
III Mounting Instructions - - - - -	11	Torque Specifications - - - - -	22

SAFETY

1. Read the operator's manual carefully and familiarize yourself with the proper use of your attachment. Do not allow anyone who is not acquainted with the Safety Instructions to use your attachment.
2. Know the controls and how to stop them quickly. **READ THE OPERATOR'S MANUAL!**
3. Do not allow children to operate the machine. Do not allow adults to operate it without proper instruction.
4. Be especially watchful of children and pets entering into the area while operating.
5. Keep your eyes and mind on your machine while mowing or operating your attachment. Don't let others distract you.
6. Do not attempt to operate your machine when not in the driver's seat.
7. Stop machine, shut off deck attachment, set parking brake, shut off engine and remove ignition key before performing any maintenance.
8. Inspect your lawn and remove any foreign objects before mowing. Never deliberately run the mower across any foreign object.
9. Wear hearing protection.
10. Wear eye protection to prevent debris from getting into your eyes.

SAFETY

WARNING! **NEVER** operate the mower unless the discharge guard and either the deflector assembly or the vacuum collector adapter are fastened securely in place.

WARNING! Do not work around the mower deck area until you are certain that the mower blades and the trimmer have stopped rotating.

WARNING! To avoid serious injury, perform maintenance on your unit; **ONLY AFTER STOPPING THE MOWER'S ENGINE AND WAITING FOR ALL MOVING PARTS TO COME TO A COMPLETE STOP.** Set the parking brake. Always remove the ignition key before beginning maintenance.

WARNING! For your own personal safety, **ALWAYS** mow **ACROSS** the face of slopes and **NEVER UP** and **DOWN** the face. **NEVER** attempt to mow excessively steep slopes, and use caution when turning on any slope.

Safety Alert Symbol



This Safety Alert Symbol means:

“ATTENTION! BECOME ALERT! YOUR SAFETY IS INVOLVED!”

This symbol is used to call attention to safety precautions that should be followed by the operator to avoid accidents. When you see this symbol, carefully read the message that follows and heed its advice. Failure to comply with safety precautions could result in death or serious bodily injury.

Safety Signs

The signal words **DANGER**, **WARNING**, and **CAUTION** are used on the equipment safety signs. These words are intended to alert the viewer to the existence and the degree of hazard seriousness.



White letters on **RED**

This signal word indicates a potentially hazardous situation which, if not avoided, will result in death or serious injury.



Black letters on **ORANGE**

This signal word indicates a potentially hazardous situation which, if not avoided, could result in death or serious injury.

It may also be used to alert against unsafe practices.



Black letters on **YELLOW**

This signal word indicates a potentially hazardous situation which, if not avoided, will result in minor or moderate injury.

It may also be used to alert against unsafe practices.

PECO LIMITED WARRANTY FOR NEW PRODUCTS

New PECO, Inc. extends the following warranties to the ORIGINAL PURCHASER of each New PECO, Inc. consumer product purchased from one of our Dealers or directly from New PECO, Inc., subject to the following limitations:

A. ITEMS COVERED UNDER WARRANTY

1. **PRODUCT WARRANTY** – Any part or parts which are deemed defective in material or workmanship, as delivered to the original purchaser, will either be repaired or replaced, as New PECO, Inc. elects, without charge for parts or labor, if the defect appears within 12 months from the date of purchase of the product to the Original Purchaser.
2. **PARTS REPLACED DURING WARRANTY** – Any New PECO, Inc. part which is furnished in performance of this warranty and is defective in material or workmanship as delivered to the purchaser will be repaired or replaced, as New PECO, Inc. elects, before the expiration of the original warranty period.

B. WARRANTY DISTINCTIONS

1. **RESIDENTIAL** - Products put to a personal use around a single household or residence are considered Residential. Products designated as “Residential” are warrantied for 12 months from the date of purchase of the product, to the ORIGINAL PURCHASER with proof of purchase, when used for or in residential applications.
2. **COMMERCIAL** – Products put to any business use (agricultural, commercial or industrial) or used at multiple locations are considered Commercial. Products designated as “Commercial” are warrantied for 12 months from the date of purchase of the product, to the ORIGINAL PURCHASER with proof of purchase, when used for or in commercial applications. Products designated as “Residential” are warrantied for 90 days from the date of purchase of the product, to the ORIGINAL PURCHASER with proof of purchase, when used for or in Commercial applications.
3. **RENTAL** – Products used for Rental or Lease Purposes are warrantied for 45 days from date of purchase of the product, to the ORIGINAL PURCHASER with proof of purchase, when used for or in a rental business.

C. ITEMS NOT COVERED BY NEW PECO WARRANTY

1. **ENGINES & BATTERIES:** Engines and Batteries attached to New PECO, Inc. products are covered under their respective separate manufacturer warranties and those companies must be contacted directly to file a warranty claim. Briggs & Stratton: https://www.briggsandstratton.com/na/en_us/support/warranty.html
2. **UNAPPROVED ALTERATION OR MODIFICATION:** All obligations of New PECO, Inc. under this warranty shall be terminated if products are altered or modified in any way not approved by New PECO, Inc.
3. **ACCIDENTS & NORMAL MAINTENANCE:** This warranty covers ONLY manufacturers defective material and workmanship. It does not cover depreciation or damage caused by normal wear & tear, accident, improper maintenance, misuse or abuse of products. New PECO, Inc. products must be operated and maintained in accordance with the instructions furnished in the manuals. The cost of normal maintenance and normal replacement of service items such as belts, cutting blades, hoses, bags, etc., which are not defective shall be paid for by the purchaser.
4. **NO SERVICE CENTER WARRANTY:** The selling Service Center/Dealer makes no warranty on his own on any item warranted by New PECO, Inc. unless he delivers to purchaser a separate written warranty certificate specifically warranting the item. The Service Center or Dealer has no authority to make any representation or promise on behalf of New PECO, Inc. or to modify the terms of the original warranty in any way.
5. **NO REPRESENTATIONS ADDITIONAL WARRANTIES, DISCLAIMER:** Neither New PECO, Inc. nor any company affiliated with New PECO, Inc. makes any warranties, representations or promises as to the quality of performance of its products other than those set forth herein. Except as described above, New PECO, Inc. makes no other warranties **AND SPECIFICALLY DISCLAIMS ANY AND ALL IMPLIED WARRANTIES OF FITNESS AND MERCHANTABILITY.**
6. **REMEDIED EXCLUSIVE:** The only remedies the purchaser has in connection with the breach or performance of any warranty on New PECO, Inc. consumer products are set forth above. In no event will New PECO, Inc. be liable for special incidental or consequential damages.

Warranty service is available through your local authorized service dealer or distributor. If you do not know the dealer or distributor in your area, search by your zip code on www.lawnvac.com or contact our Sales Department at New PECO, Inc. 800-438-5823 or email Sales@lawnvac.com.

Section 1 Introduction

Thank you for purchasing the newly re-designed PECO Z-Trimmer model number ZT-3000. We took all the great features our customers have grown to love, and improved them for greater durability and performance.

The Z-Trimmer is an attachment for your riding mower, zero-turn mower or tractor, that allows you to trim and mow at the same time. Your productivity and efficiency will improve and you will save time and labor.

The Z-Trimmer is designed for light duty trimming, and is equipped with a thermal circuit breaker. If the breaker trips while in operation, your electric motor is operating at a higher temperature than recommended. Use of the Z-Trimmer in heavy duty applications may create excessive draw from the electrical system for the machine on which the trimmer is mounted, resulting in incomplete charging of the machine's battery. For optimum performance, alternating use of the Z-Trimmer and normal mowing is recommended.

Note: Always operate the Z-Trimmer with the mower or tractor at full throttle.

The trimmer line should be no longer than 6" per side of the trimmer head. Longer lengths will cause excessive power consumption and reduce the efficiency of the trimmer.

The breakaway action of the Z-Trimmer is intended to provide relief when hitting objects. Many zero turn radius mowers travel at speeds of 8+ MPH. At speeds greater than 2 MPH, hitting objects with the Z-Trimmer **will** cause damage to the unit. The trimmer is intended to trim at a speed of 1 MPH, depending on the material that is being trimmed. Trimming at faster speeds will decrease performance of the trimmer.



NOTE: Always wear the proper personal protection equipment when operating the PECO Z-Trimmer.



Section 2 Installation For Use

Pivot Block Assembly Installation

Position and place the Pivot Spring (Item #2) over the Pivot Bushing of the Base Plate Assembly (Item #3). Position the top end of the Pivot Spring over the right side of the Spring Bracket of the Base Plate Assembly and the lower end of the Pivot Spring over the bottom left side of the Spring Bracket. Refer to Figure A.

Next, position the Pivot Block Assembly (Item #1) aligning the Pivot Bushing of the Base Plate Assembly to that of the Pivot Block Bushing of the Pivot Block Assembly, and at the same time, aligning and positioning the Pivot Pin in between the Pivot Spring. Refer to Figure B.

Note: Some parts and part features have been hidden from view from each respective view for visual clarity.

Figure A

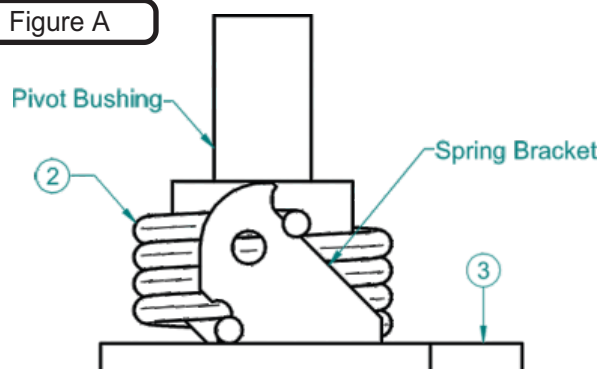
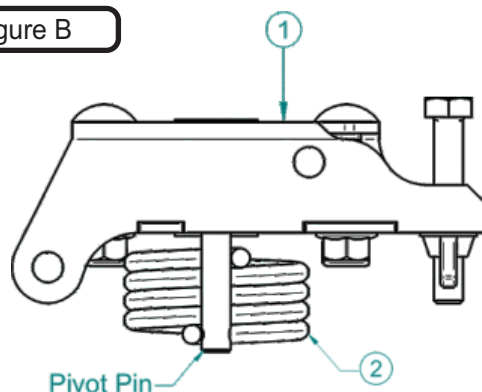


Figure B

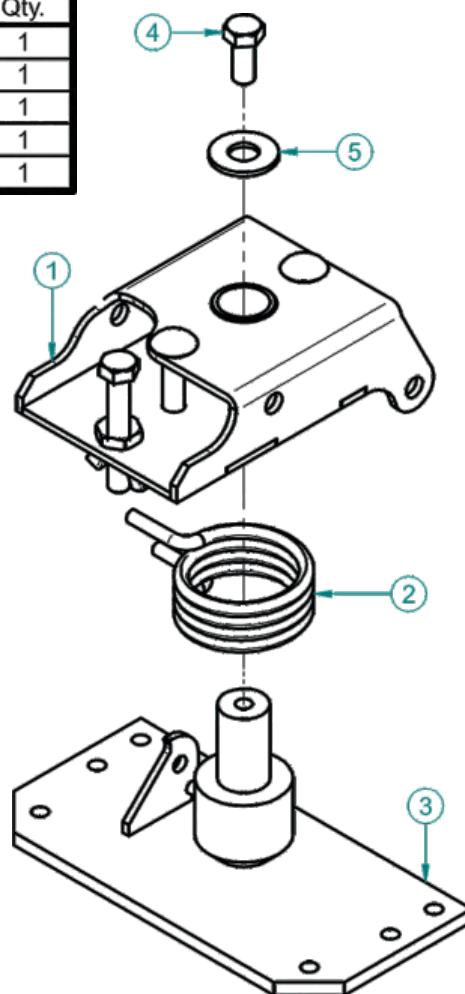
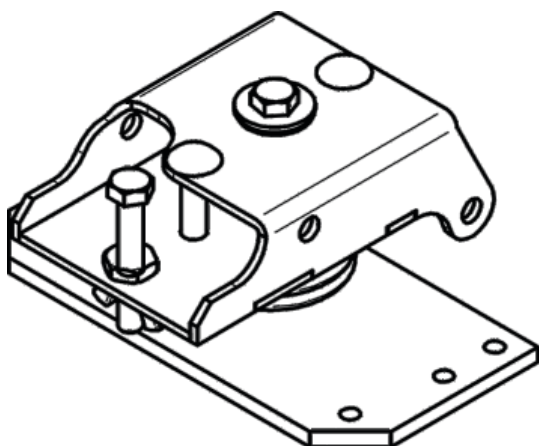


Item #	Part #	Desc.	Qty.
1	ZTA-0004_01	Pivot Block Assembly	1
2	ZT-0010	Pivot Spring	1
3	ZTA-0102	Base Plate Assembly	1
4	K1153	HHCS 5/16"-18 x 3/4"	1
5	K0047	Flat Washer 3/8" / 1.00 OD x .446 ID x .075 T	1

Finally, secure the Pivot Block Assembly to the Base Plate Assembly by using (1) 5/16"-18 x 3/4" HHCS (Item #4) and (1) 3/8" Flat Washer (Item #5). Refer to Figure C.

Figure C

Assembled View



Exploded View

Refer to Page 16 for the exploded view of the Pivot Block Assembly P#(ZTA-0004_01)

Upper & Lower Handle Assembly

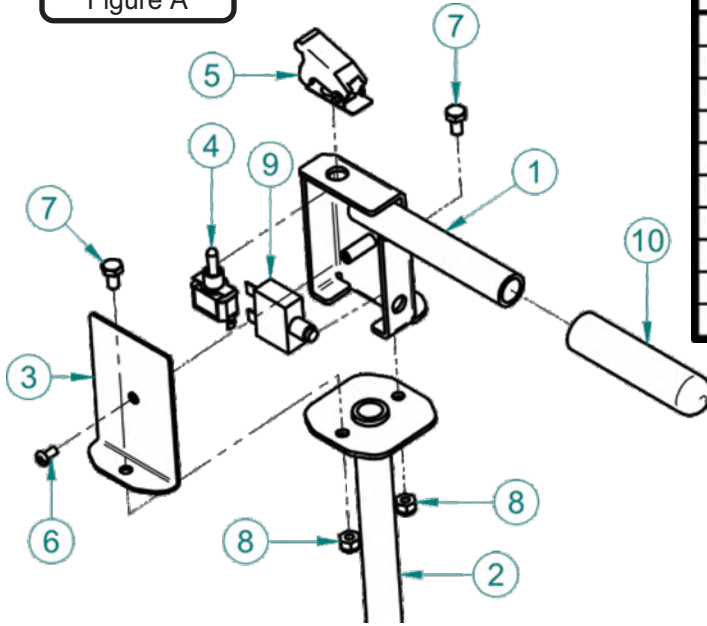
First, install the Power Switch (Item #4) by inserting it through the top mount hole of the Upper Handle Assembly (Item #1). Position and place the Safety Cover (Item #5) over the Power Switch and using the Power Switch's knurl nut, secure the Power Switch and Safety Cover. Refer to Figure A.

Next, position and mount the Circuit Breaker (Item #9) through the right mounting hole of the Upper Handle Assembly. Then position the Electrical Cover (Item #3) in front of the Upper Handle Assy aligning the mounting hole with the mounting bushing. Secure the Electrical Cover by using (1) 10-32 x 3/8" Pan Head Screw (Item #6).

Finally, position the assembled Upper Handle Assembly over the Lower Handle Assembly (Item #2) and secure both Upper and Lower Handle Assembly by using (2) 1/4"-20 x 1/2" HHCS (Item #7) and (2) 1/4"-20 Nyloc Nuts (Item #8).

Fit the Handle Grip (Item #10) over the handle of the Upper Handle Assembly. Refer to Figure A.

Figure A



Item #	Part #	Desc.	Qty.
1	ZTA-0111	Upper Handle Assembly	1
2	ZTA-0112	Lower Handle Assembly	1
3	ZT-0032	Electrical Cover	1
4	J2001	Power Toggle Switch	1
5	P0073	Safety Cover for Toggle	1
6	K0320	10-32 x 3/8" Pan Head Screw	1
7	K1296	1/4"-20 x 5/8" HHCS	2
8	K1128	1/4"-20 Nyloc Nut	2
9	P0018	20 Amp Manual Circuit Breaker	1
10	V1158	Handle Grip	1

Note: Some parts and features have been hidden from view for visual clarity.

Lower Handle Assembly Installation

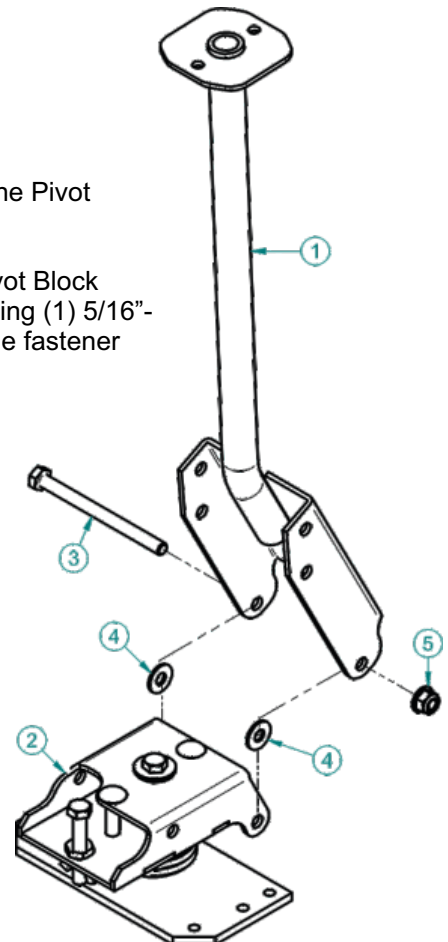
Position the Lower Handle Assembly (Item #1) to the lower rear mount holes of the Pivot Block Assembly (Item #2).

Place (1) 1/4" Flat Washer (Item #4) between the Lower Handle Assy and the Pivot Block Assembly on both sides. Refer to Figure B. Secure the Lower Handle Assy by using (1) 5/16"-18 x 4" HHCS (Item #3) and (1) 5/16"-18 Ny-Flange Lock Nut (Item #5). Leave the fastener loose enough so that the Lower Handle Assembly can freely pivot.

Note: Some parts and features have been hidden from view for visual clarity.

Figure B

Item #	Part #	Desc.	Qty.
1	ZTA-0112	Lower Handle Assembly	1
2	ZTA-0004_01	Pivot Block Assembly	1
3	K0293	5/16"-18 x 4" HHCS	1
4	K0037	Flat Washer / 1/4" (.75 OD x .312 ID x .060 T)	2
5	K2516	Ny-Flange Lock Nut 5/16"-18	1

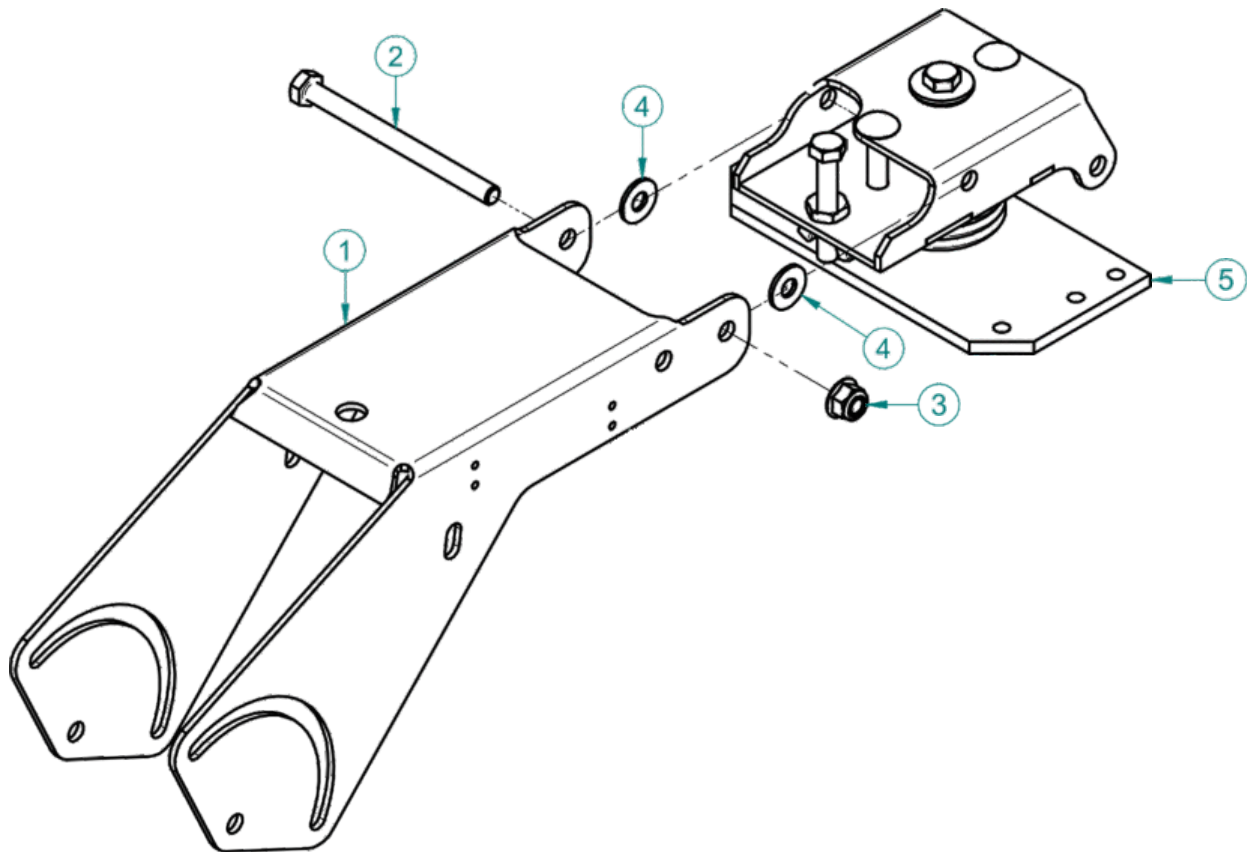


Swing Arm Installation

Position the Swing Arm (Item #5) to the front mount holes of the Pivot Block Assembly (Item #1). Place (1) 1/4" Flat Washer (Item #4) between the Swing Arm and the Pivot Block Assembly on both sides. Refer to the figure below.

Secure the Lower Handle Assy by using (1) 5/16"-18 x 4" HHCS (Item #2) and (1) 5/16"-18 Ny-Flange Lock Nut (Item #3). Leave fastener loose enough so that the Swing Arm will be able to pivot up and down freely.

Note: Some parts and part feature may have been hidden from view for visual clarity.



Item #	Part #	Desc.	Qty.
1	ZT-0106	Swing Arm	1
2	K0293	5/16"-18 x 4-" HHCS	1
3	K2516	Ny-Flange Lock Nut 5/16"-18	1
4	K0037	Flat Washer / 1/4" (.75 OD x .312 ID x .060 T)	2
5	ZTA-0004_01	Pivot Block Assembly	1

Note: Some parts and features have been hidden from view for visual clarity.

Motor & Trimmer Head Installation (Cont.)

Place the Motor (Item #1) into the Motor Mount Pivot (Item #2) and align the Head Shroud (Item #3) under the Motor Mount Pivot and secure the Motor by using (2) 10-32 Hex Nuts (Item #8). Refer to Figure B.

Place the Shaft Bushing (Item #5) onto the shaft of the Motor and use (1) 1/4"-28 x 1/4" Set Screw (Item #7) to secure the Shaft Bushing. Once secured, position the Shaft Nut (Item #6) so that the shoulder is facing downwards away from the Z-Trim Head (Item #4). Insert the Shaft Nut and secure the Shaft Nut to the Shaft Bushing (Item #5). Refer to Figure A & Figure B.

Torque the Shaft Nut to 30 ft/lbs.

Note: Some parts and features have been hidden from view for visual clarity.

Figure A

Item #	Part #	Desc.	Qty.
1	ZT-0014	3" PMDC Motor	1
2	ZT-0108	Motor Mount Pivot	1
3	ZT-0027	Head Shroud	1
4	V0065	Z-Trim Head / Unibody	1
5	ZT-0012	Shaft Bushing	1
6	ZT-0013	RH Threaded Shaft Nut	1
7	K0295	1/4"-28 x 1/4" Set Screw	1
8	K0357	10-32 HEX NUT	2

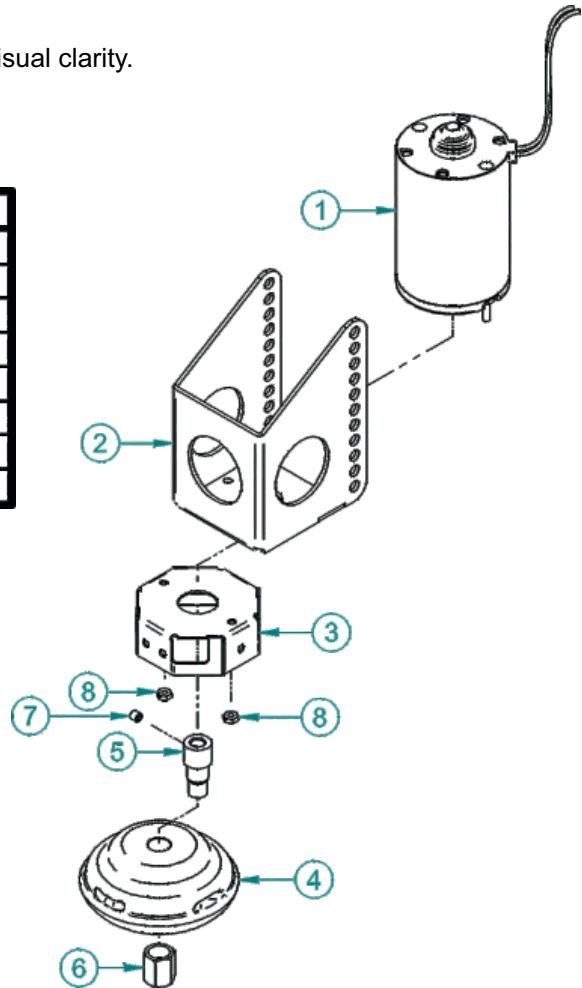
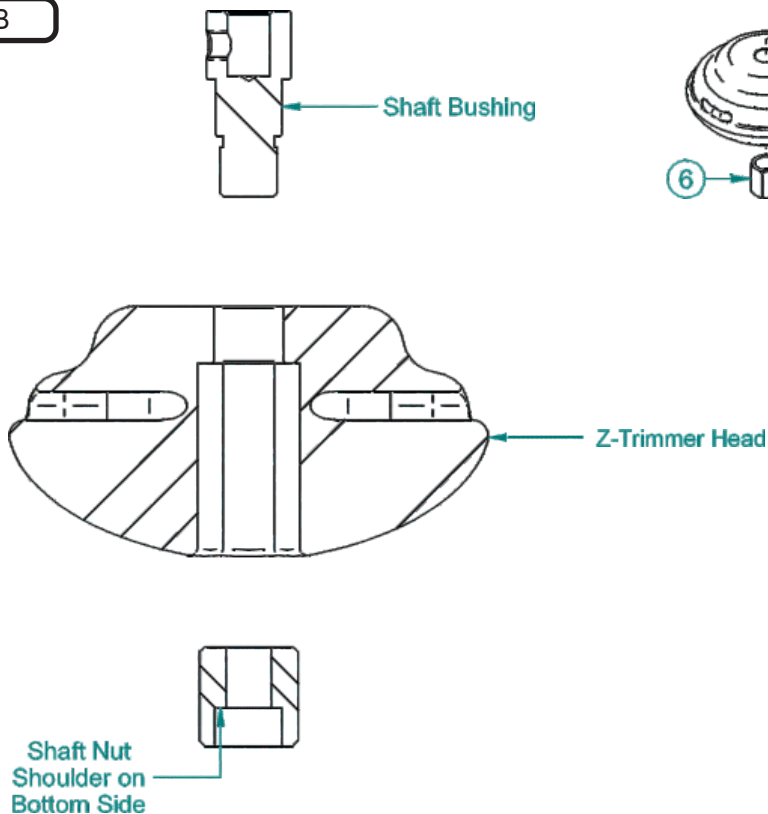


Figure B



Motor Mount Pivot Installation

Position (2) of the mounting holes of the Motor Mount Pivot (Item #1) between the Swing Arm (Item #2). Refer to Figure A. For desired cut height adjustments, see [page 11](#).

Item #	Part #	Desc.	Qty.
1	ZT-0108	Motor Mount Pivot	1
2	ZT-0106	Swing Arm	1
3	ZT-0009	Pivot Lock Bushing	1
4	K0292	5/16"-18 x 4-1/2" Carriage Bolt	1
5	K1163	5/16"-18 x 4-1/4" HHCS	1
6	K0037	Flat Washer / 1/4" (.75 OD x .312 ID x .060 T)	4
7	K2516	Ny-Flange Lock Nut 5/16"-18	1
8	J0256	Star Knob	1

Note: Some parts and features have been hidden from each respective view for visual clarity.

Once positioned, secure the Motor Mount Pivot by positioning the Pivot Lock Bushing (Item #3) between the top mount hole you are using of the Motor Mount, refer to Figure B. Then use (1) 5/16"-18 x 4-1/2" Carriage Bolt (Item #4), (2) 1/4" Flat Washers (Item #6) and (1) Star Knob (Item #8) to secure the Motor Mount Pivot. Leave the fastener loose enough so that the Motor Mount Pivot will be able to pivot back and forth freely.

Then use (1) 5/16"-18 x 4-1/4" HHCS (Item #5), (2) 1/4" Flat Washers (Item #6) and (1) 5/16"-18 Ny-Flange Lock Nut (Item #7) on the bottom mount hole of the Motor Mount Pivot.

Refer to Figure C.

Figure A

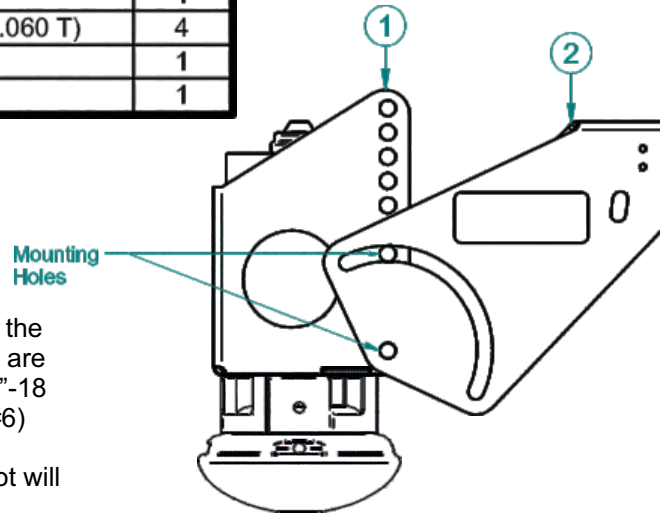


Figure B

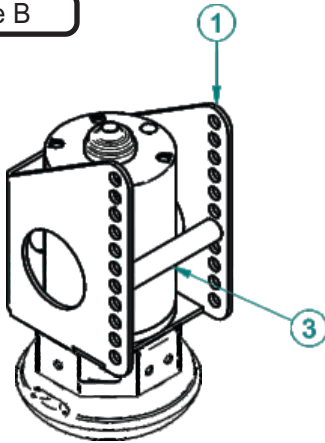
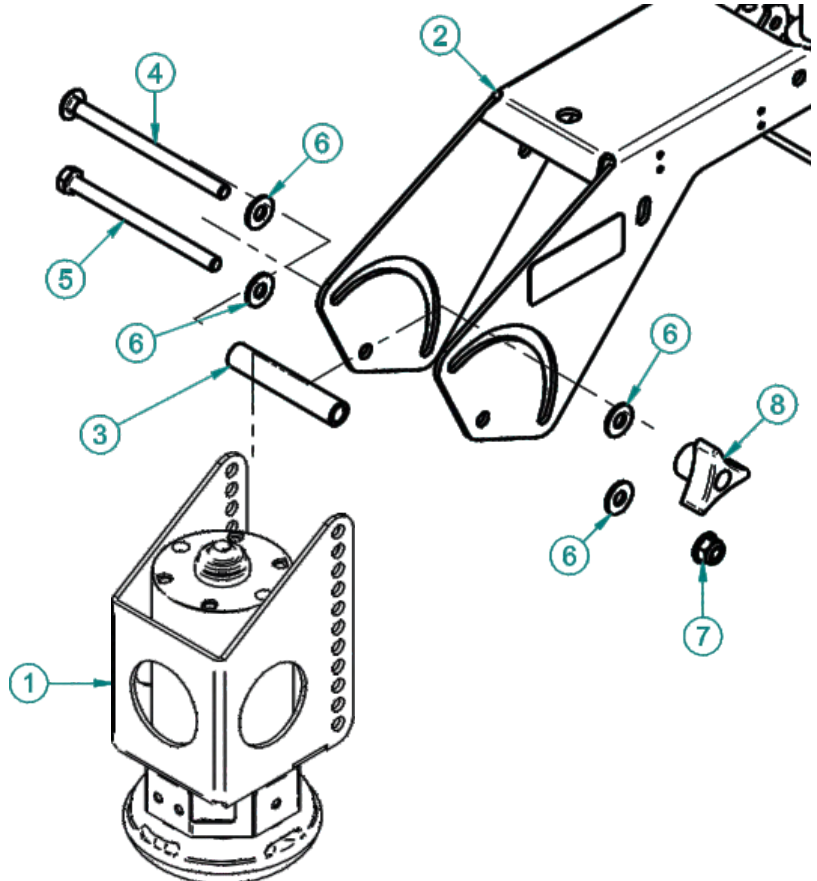


Figure C



Section 3 Mounting Instructions

NOTE: The Z-Trimmer is designed to fit most styles of mowing decks. We recommend using 4 mounting holes to secure the Z-Trimmer to the mowing deck. The style of mowing deck on your machine will determine which mounting holes you will use.

Before drilling any holes into your mowing deck, locate the best position for the Z-Trimmer. Things you should consider before drilling any holes:

- Clearance for the Z-Trimmer in both the up and down positions.
- Accessibility to the handle from the operator's seat.
- Distance between the trimmer head and the mowing deck when the Z-Trimmer is in the engaged position.
- Check for possible blade interference.

Place the Z-Trimmer to the side of the mowing deck opposite of the grass discharge chute. Position the base plate so that the plate is flush with the edge of the deck and on center. Once in position, mark four holes from the base plate onto your mowing deck. Drill the holes with a 1/4" (.250-.257) drill bit. Secure the Z-Trimmer to the mowing deck using (4) 1/4"-20 x 1" Hex Bolts P#(K1125) and (4) 1/4"-20 Nylon Flange Locknuts P#(K2014). Refer to Figure A and B.

Figure A

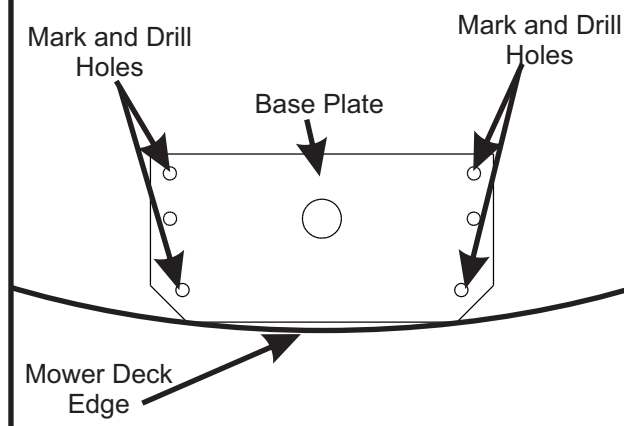
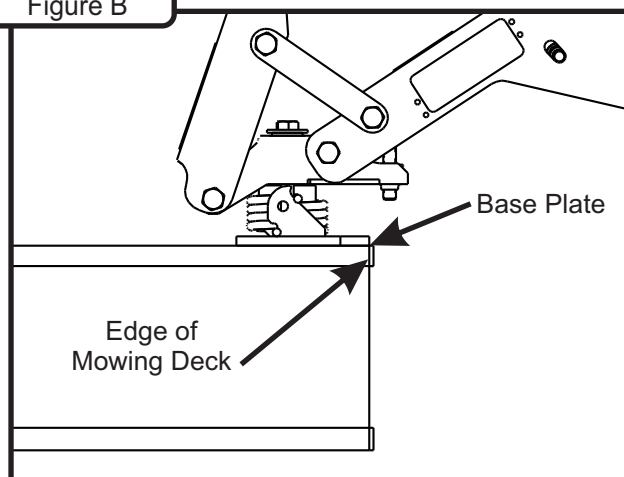


Figure B



NOTE: Route the power cable before connecting the cable to the battery. After the Z-trimmer has been secured to the mowing deck, connect the main power cable to the mower battery (connect the **red** wire to the **positive** terminal and the **black** wire to the **negative** terminal). Route the cable around the outside of the operator seat so that the cable does not interfere with the seat or the control arms. Keep cable away from all heat sources. Use zip-ties to secure the power cable, once the best routing has been determined.

Section 4 Operating Instructions

Trimming

When not in use, the Z-Trimmer should be in the upright position with the latch hook secured. See Figure A.

1. Release the latch hook and lower the trimmer into the down position. Refer to Figure B.

Figure C

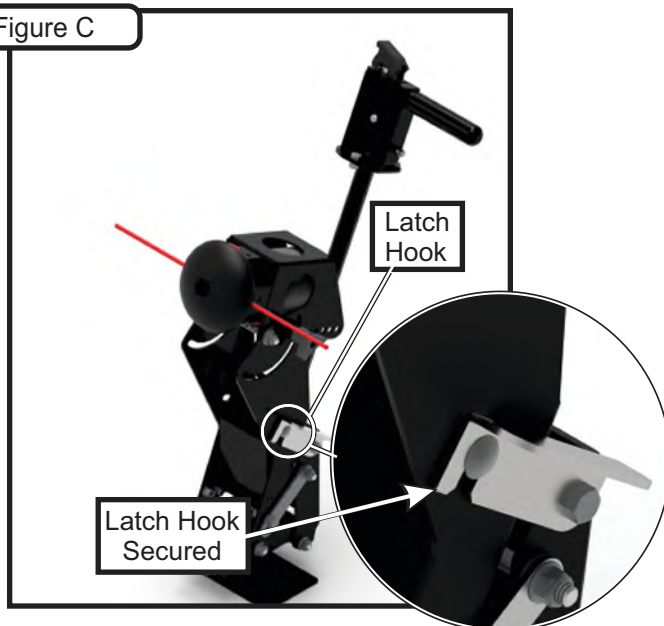
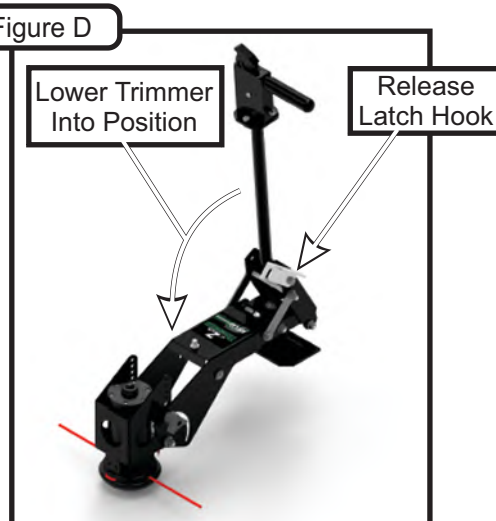
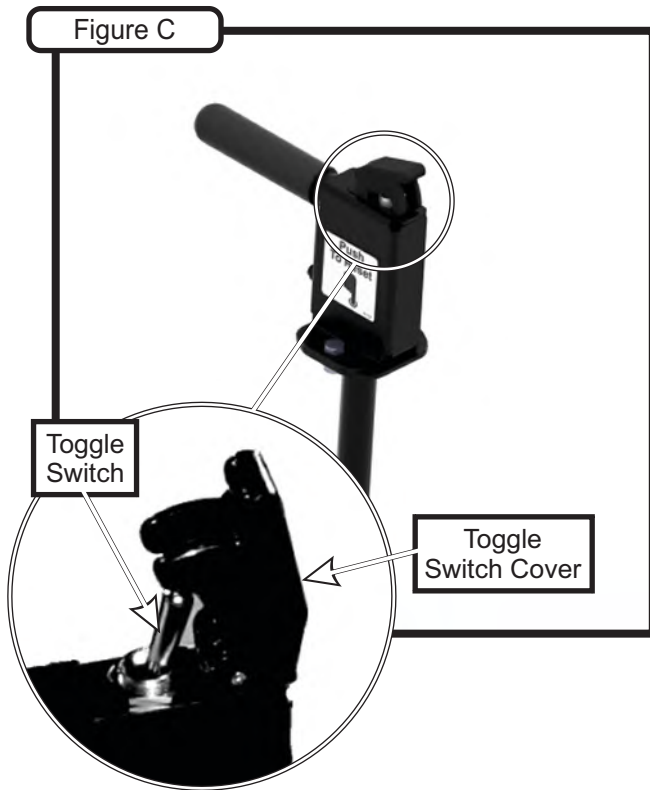


Figure D



Trimming (cont.)

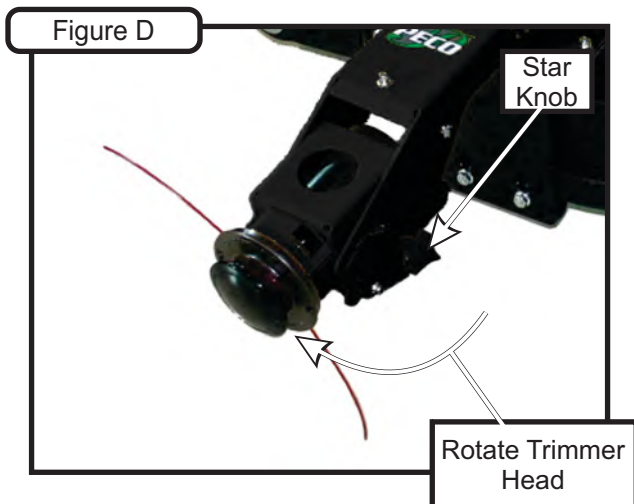
To activate trimmer head, lift the toggle switch cover and flip the toggle switch forward. To de-activate the trimmer head, push the toggle switch cover down. Refer to Figure C.



NOTE: If the circuit breaker on the Z-Trimmer trips, close the toggle switch cover, wait five seconds and then push the reset button before turning on.

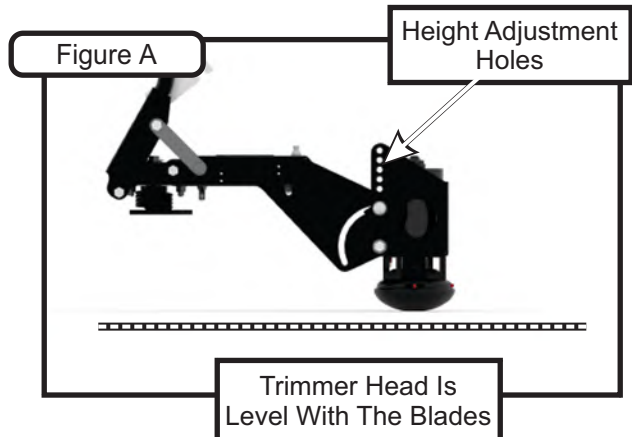
Edging

To position the trimmer head for edging, loosen the star knob shown in Figure D, rotate the trimmer head into the position desired for edging and re-tighten the star knob.



Section 5 Height Adjustment

While in the down position, adjust the height of the trimmer head so that it is in line with the blades on the mower deck.



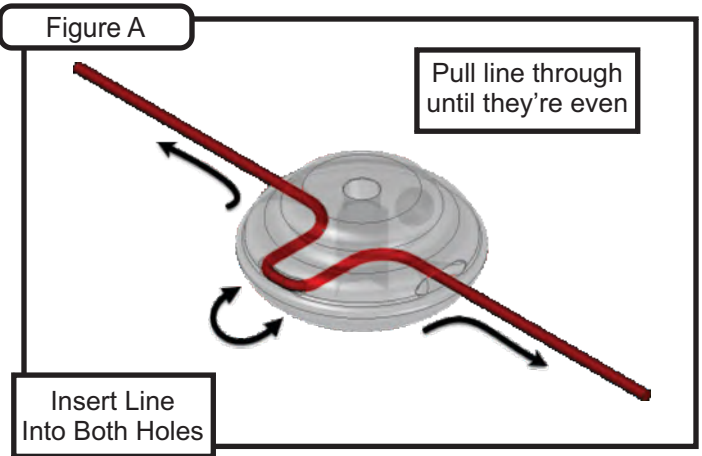
For fine tuning adjustment of the height, use the adjustment bolt shown in Figure B. Turn the bolt clockwise to lower the swing arm, or counter-clockwise to raise the swing arm.



Section 6 Trimmer Line

To replace trimmer line, bend a new line into two equal lengths, insert the line ends into the holes on the trimmer head. The head will automatically route the line out the correct hole. Pull each end taught and adjust if uneven. Refer to Figure A.

To order more trimmer line P#(ZT-0017), contact PECO at (800) 438-5823.



Section 7 Debris Guard Installation - For ZT-3001 Units

ZT-3001 Units are specifically for the EU market.

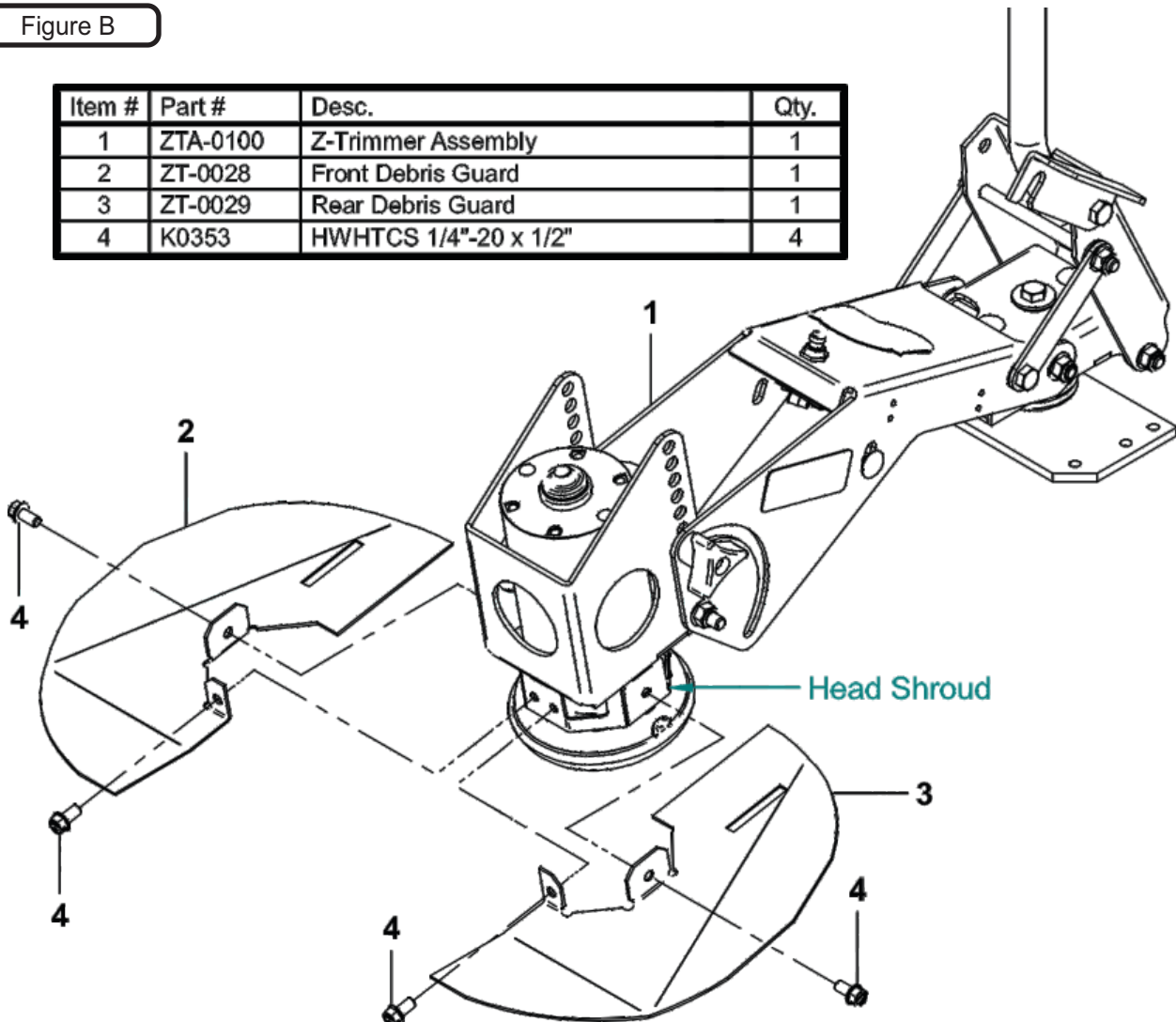
The ZT-3001 is equipped with a Front Debris Guard (Item #2) & Rear Debris Guard (Item #3).

To Install the Front Debris Guard (Item #2), align the (2) mount holes with the Z-Trimmer's Head Shroud as shown in Figure B below. Secure the Debris Guard to the Z-Trimmer (Item #1) by using (2) 1/4"-20 x 1/2" HWHTCS (Item #4).

To Install the Rear Debris Guard (Item #3), align the (2) mount holes with the Z-Trimmer's Head Shroud as shown in Figure B below. Secure the Debris Guard to the Z-Trimmer (Item #1) by using (2) 1/4"-20 x 1/2" HWHTCS (Item #4).

Figure B

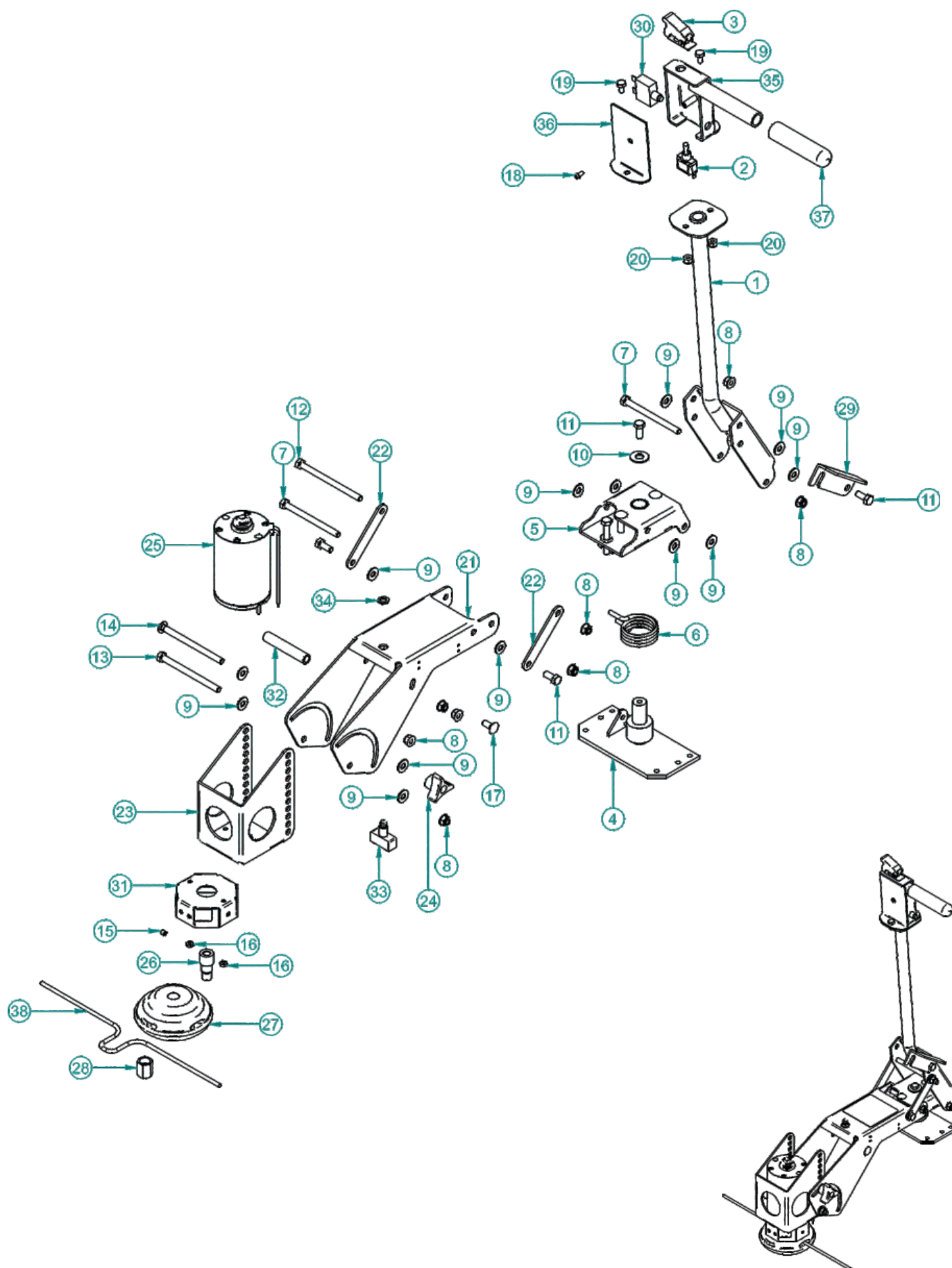
Item #	Part #	Desc.	Qty.
1	ZTA-0100	Z-Trimmer Assembly	1
2	ZT-0028	Front Debris Guard	1
3	ZT-0029	Rear Debris Guard	1
4	K0353	HWHTCS 1/4"-20 x 1/2"	4



Section 8 Tips and Recommendations

- Because the Z-Trimmer runs off your machine's charging system, it is recommended to operate the machine at full throttle when using the Z-Trimmer.
- Inspect the Z-Trimmer before each and every use. Examine the base plate to ensure the Z-Trimmer is tightly secured to your machine. Make sure the power cable is secure. Check all moving parts for damage or obstruction. Inspect the trimmer head and line.
- Check the head shroud for any debris before using the Z-Trimmer. Clean if necessary.
- If the circuit breaker trips repeatedly, slow your speed and/or adjust your height setting.
- Keep your trimmer line in an easily accessible, but secure place on your machine. Practice replacing the trimmer line from the operator seat to save time.
- If the Z-Trimmer gets hung up or caught on something, **STOP** and **TURN THE POWER OFF** before inspecting the situation.
- Ensure the Z-Trimmer is in the correct angle (trimming/edging) and that the star knob is tightened securely before use.
- Always inspect the area you are trimming before operating your Z-Trimmer. Look for anything that could potentially get caught up in the trimmer head, or damage the trimmer.

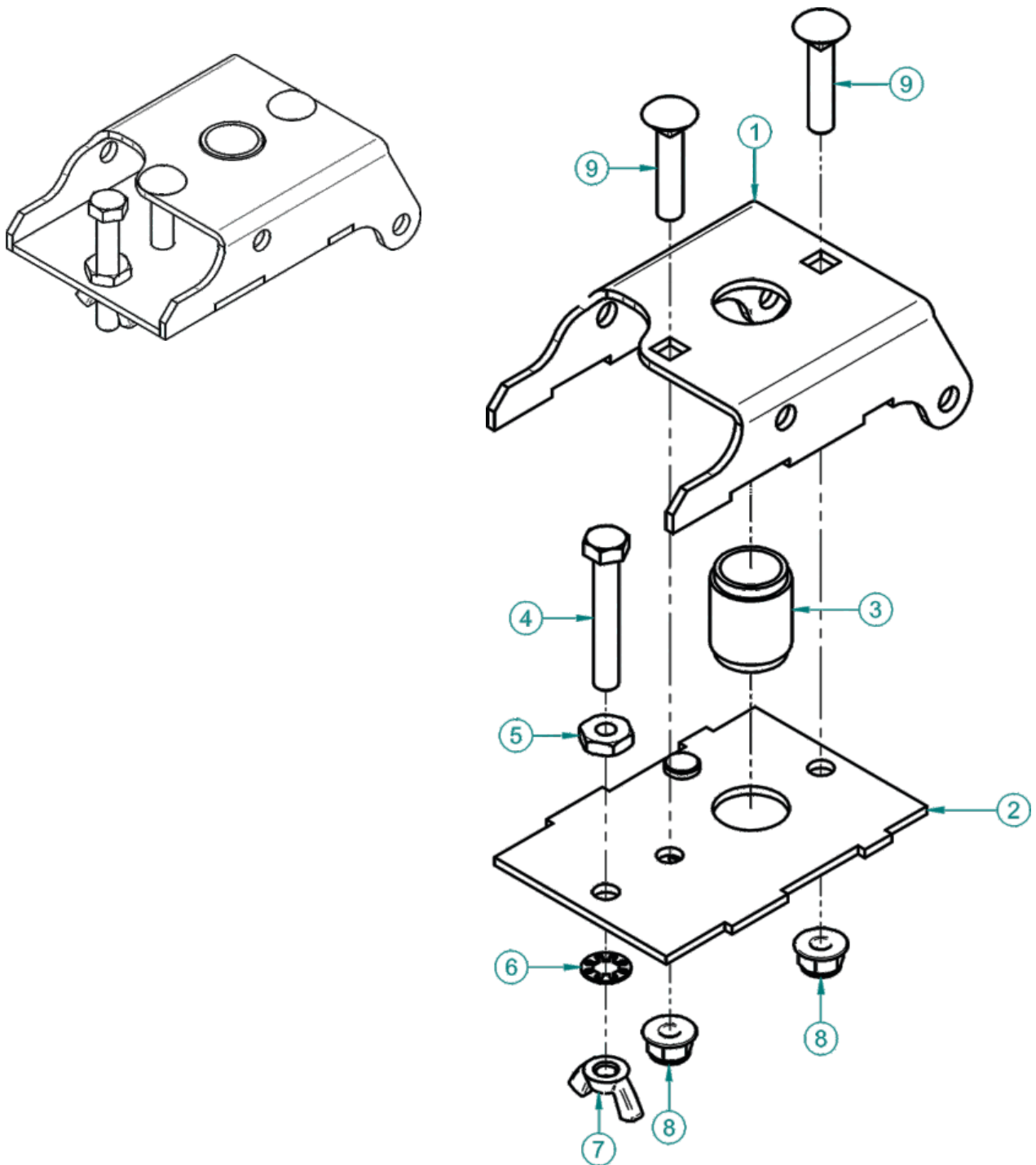
ZTA-0100 Z-Trimmer Assembly Exploded View



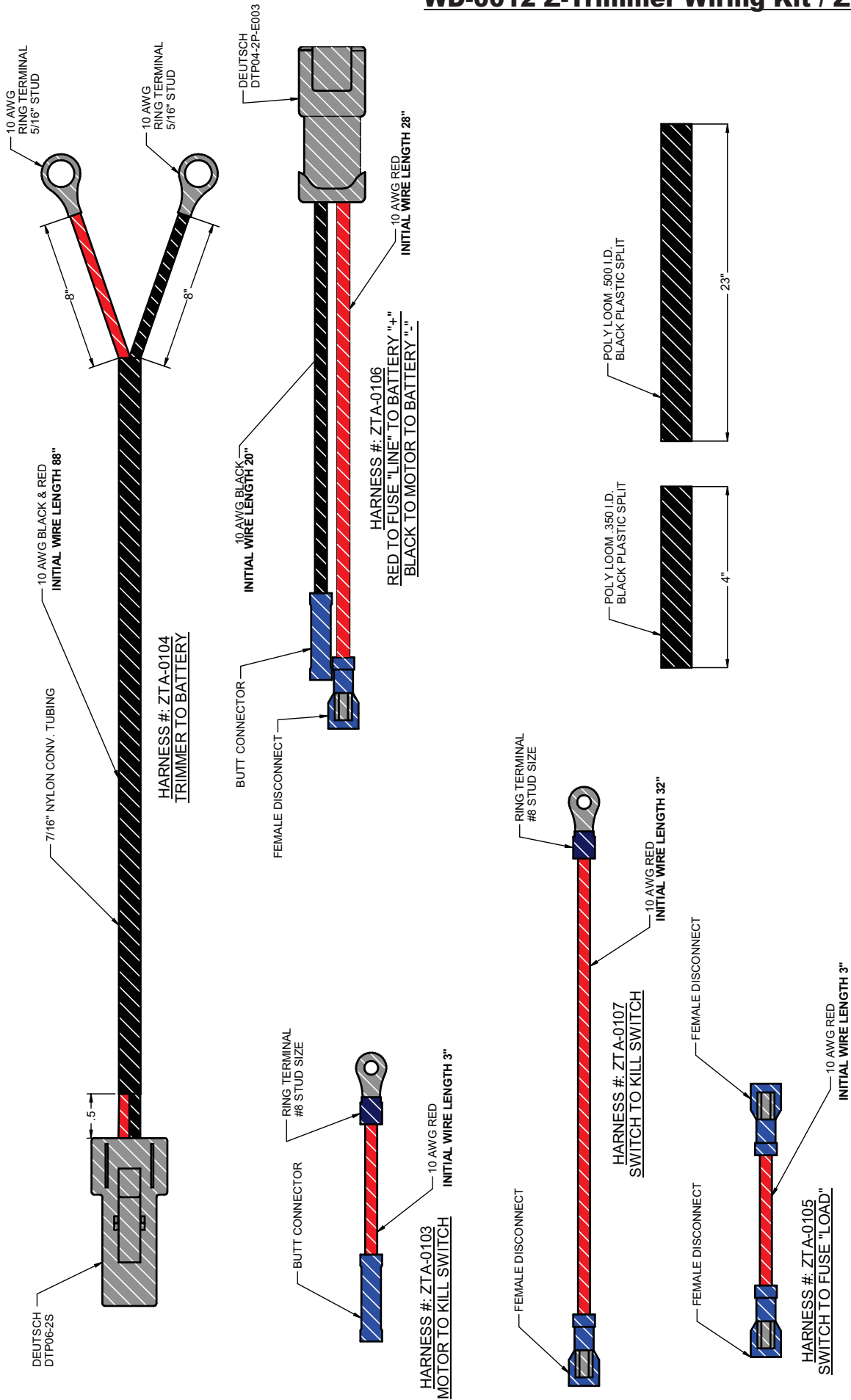
ZTA-0100 Z-Trimmer Assembly Exploded Parts List

Item #	Part #	Desc.	Qty.
1	ZTA-0112	Lower Handle Assembly	1
2	J2001	Power Toggle Switch	1
3	P0073	Safety Cover for Toggle	1
4	ZTA-0102	Base Plate Assembly	1
5	ZTA-0004_01	Pivot Block Assembly	1
6	ZT-0010	Pivot Spring	1
7	K0293	5/16"-18 x 4-" HHCS	2
8	K2516	Ny-Flange Lock Nut 5/16"-18	8
9	K0037	Flat Washer / 1/4" (.75 OD x .312 ID x .060 T)	13
10	K0047	Flat Washer 3/8" / 1.00 OD x .446 ID x .075 T	1
11	K1153	HHCS 5/16"-18 x 3/4"	4
12	K0294	5/16"-18 x 4-1/2" HHCS	1
13	K1163	5/16"-18 x 4-1/4" HHCS	1
14	K0292	5/16"-18 x 4-1/2" Carriage Bolt	1
15	K0295	1/4"-28 x 1/4" Set Screw	1
16	K0357	10-32 HEX NUT	2
17	K1142	5/16"-18 x 3/4" Carriage Bolt	1
18	K0320	10-32 x 3/8" Pan Head Screw	1
19	K1105	1/4"-20 x 1/2" HHCS	2
20	K1128	1/4"-20 Nyloc Nut	2
21	ZT-0106	Swing Arm	1
22	ZT-0004	Swing Arm Bracket	2
23	ZT-0108	Motor Mount Pivot	1
24	J0256	Star Knob	1
25	ZT-0014	3" PMDC Motor	1
26	ZT-0012	Shaft Bushing	1
27	V0065	Z-Trimmer Head / Unibody	1
28	ZT-0013	Shaft Nut	1
29	ZT-0026	Latch Hook	1
30	P0018	20 Amp Manual Circuit Breaker	1
31	ZT-0027	Head Shroud	1
32	ZT-0009	Pivot Lock Bushing	1
33	P0082	OPS SWITCH	1
34	J2005	15/32"-32 Hex Panel Nut	1
35	ZTA-0111	Upper Handle Assembly	1
36	ZT-0032	Electrical Cover	1
37	V1158	Handle Grip	1
38	ZT-0017	Trimmer Line / Vortex	1

ZTA-0004 01 Pivot Block Assembly Exploded Parts List



Item #	Part #	Desc.	Qty.
1	ZT-0023_01	Pivot Block Top	1
2	ZTA-0015	Pivot Block Stiffner Weldment	1
3	ZT-0021	Pivot Block Bushing	1
4	K1159	5/16"-18 x 2" All Thread HHCS	1
5	K0120	5/16"-18 JAM NUT	1
6	K0044	I/T Tooth Lock Washer 5/16"	1
7	K0141	Wing Nut 5/16"-18 Zinc	1
8	K2516	Ny-Flange Lock Nut 5/16"-18	2
9	K1147	5/16"-18 x 1-1/2" Carriage Bolt	2



		Model #: ZT-3000	
		Desc: Z-Trimmer	Owner's Manual: Q0447
		Revision #: 1 - Updated Pack DWG - XY 2/10/2020	

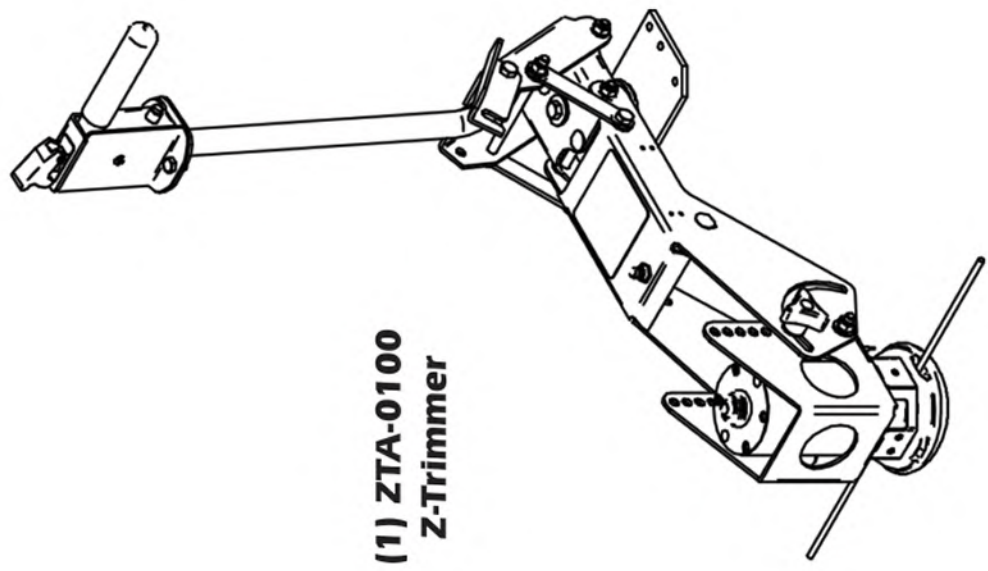
☐ ZT-3000

**(1) HB0502
Hardware
Bag**



**(2) ZT-0017
Vortex Trimmer
Line**

**(1) ZTA-0100
Z-Trimmer**





Model #: ZT-3001

Desc: Z-Trimmer w/ Debris Guard

Owner's Manual: Q0447

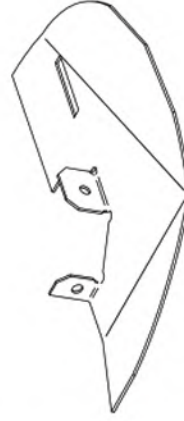
Revision #: 0

☐ ZT-3001

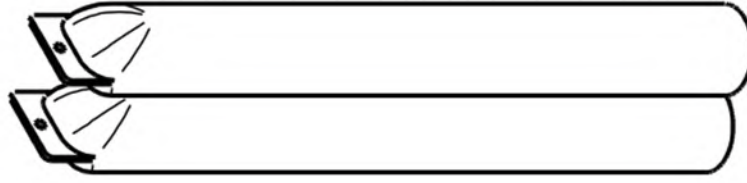
**(1) Hb0866
Hardware
Bag**



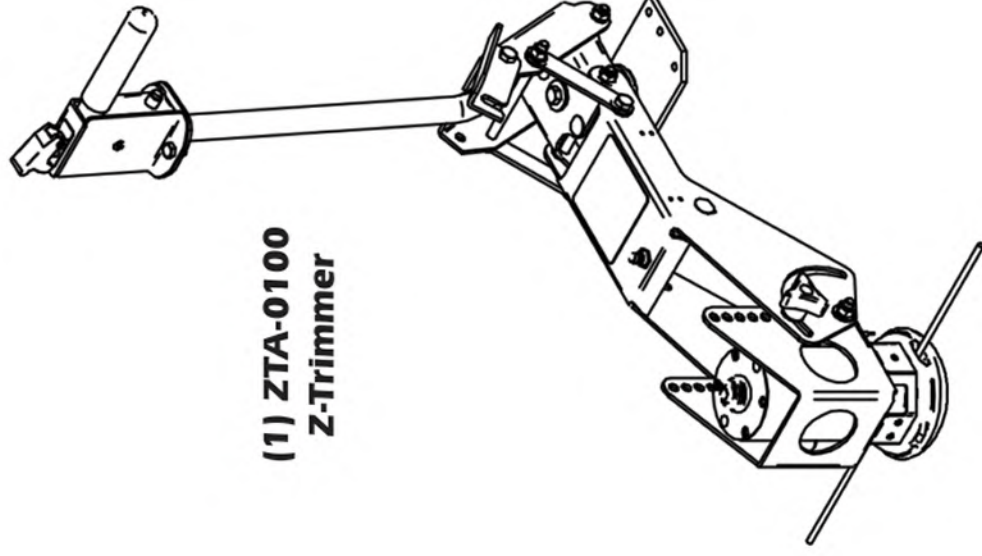
**(1) ZT-0028
Front Debris Guard**



**(1) ZT-0029
Rear Debris Guard**



**(2) ZT-0017
Vortex Trimmer
Line**



**(1) ZTA-0100
Z-Trimmer**

SAFETY DECALS

To promote safe operation, New PECO, Inc. supplies safety decals on all products manufactured. Damage can occur to safety decals either through shipment, use or reconditioning. Contact your local Service Center for replacement decals.



Z-Trimmer Logo
Part# R1104_01



Danger/Caution Label
Part# R1105



Push To Reset Label
Part# R1107

**THE SERIAL NUMBER PLATE IS LOCATED ON THE
ON/OFF SWITCH BOX.**

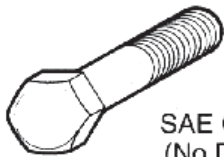
PECO	
OUTDOOR POWER EQUIPMENT	
Model Number	ZT-3000
Serial Number	
Arden, North Carolina 28704	

WRITE THE SERIAL NUMBER IN THE
BOX ABOVE FOR FUTURE REFERENCE.

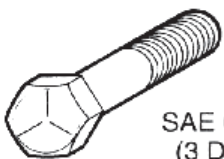
TORQUE SPECIFICATIONS

Proper torque for American fasteners used on Peco equipment.
Recommended Torque in Foot Pounds (Newton Meters).*

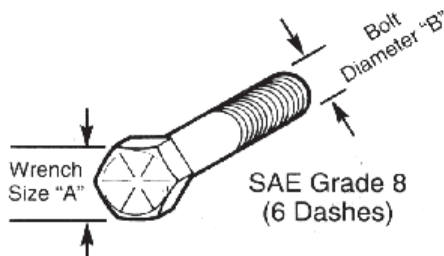
AMERICAN Bolt Head Markings



SAE Grade 2
(No Dashes)



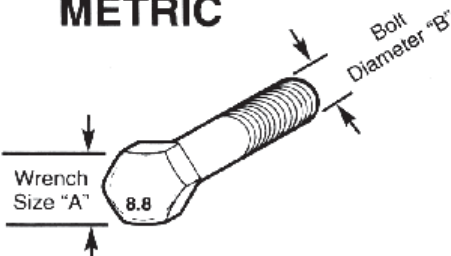
SAE Grade 5
(3 Dashes)



SAE Grade 8
(6 Dashes)

WRENCH SIZE (IN.) "A"	BOLT DIAMETER (IN.) "B" AND THREAD SIZE	SAE GRADE 2	SAE GRADE 5	SAE GRADE 8
7/16	1/4 - 20 UNC	6 (7)	8 (11)	12 (16)
7/16	1/4 - 28 UNF	6 (8)	10 (13)	14 (18)
1/2	5/16 - 18 UNC	11 (15)	17 (23)	25 (33)
1/2	5/16 - 24 UNF	13 (17)	19 (26)	27 (37)
9/16	3/8 - 16 UNC	20 (27)	31 (42)	44 (60)
9/16	3/8 - 24 UNF	23 (31)	35 (47)	49 (66)
5/8	7/16 - 14 UNC	32 (43)	49 (66)	70 (95)
5/8	7/16 - 20 UNF	36 (49)	55 (75)	78 (106)
3/4	1/2 - 13 UNC	49 (66)	76 (103)	106 (144)
3/4	1/2 - 20 UNF	55 (75)	85 (115)	120 (163)
7/8	9/16 - 12 UNC	70 (95)	109 (148)	153 (207)
7/8	9/16 - 18 UNF	79 (107)	122 (165)	172 (233)
15/16	5/8 - 11 UNC	97 (131)	150 (203)	212 (287)
15/16	5/8 - 18 UNF	110 (149)	170 (230)	240 (325)
1-1/8	3/4 - 10 UNC	144 (195)	266 (360)	376 (509)
1-1/8	3/4 - 16 UNF	192 (260)	297 (402)	420 (569)
1-5/16	7/8 - 9 UNC	166 (225)	430 (583)	606 (821)
1-5/16	7/8 - 14 UNF	184 (249)	474 (642)	668 (905)
1-1/2	1 - 8 UNC	250 (339)	644 (873)	909 (1232)
1-1/2	1 - 12 UNF	274 (371)	705 (955)	995 (1348)
1-1/2	1 - 14 UNF	280 (379)	721 (977)	1019 (1381)
1-11/16	1-1/8 - 7 UNC	354 (480)	795 (1077)	1288 (1745)
1-11/16	1-1/8 - 12 UNF	397 (538)	890 (1206)	1444 (1957)
1-7/8	1-1/4 - 7 UNC	500 (678)	1120 (1518)	1817 (2462)
1-7/8	1-1/4 - 12 UNF	553 (749)	1241 (1682)	2013 (2728)
2-1/16	1-3/8 - 6 UNC	655 (887)	1470 (1992)	2382 (3228)
2-1/16	1-3/8 - 12 UNF	746 (1011)	1672 (2266)	2712 (3675)
2-1/4	1-1/2 - 6 UNC	870 (1179)	1950 (2642)	3161 (4283)
2-1/4	1-1/2 - 12 UNF	979 (1327)	2194 (2973)	3557 (4820)

METRIC



Numbers appearing on bolt heads indicate ASTM class.

Proper torque for metric fasteners used on Peco equipment.
Recommended torque in foot pounds (newton Meters).*

WRENCH SIZE (mm) "A"	BOLT DIA. (mm) "B"	ASTM 4.6	ASTM 8.8	ASTM 9.8	ASTM 10.9
8	5	1.8 (2.4)		5.1 (6.9)	6.5 (8.8)
10	6	3 (4)		8.7 (12)	11.1 (15)
13	8	7.3 (10)		21.1 (29)	27 (37)
16	10	14.5 (20)		42 (57)	53 (72)
18	12	25 (34)	74 (100)	73 (99)	93 (126)
21	14	40 (54)	118 (160)	116 (157)	148 (201)
24	16	62 (84)	167 (226)	181 (245)	230 (312)
30	20	122 (165)	325 (440)		449 (608)
33	22		443 (600)		611 (828)
36	24	211 (286)	563 (763)		778 (1054)
41	27		821 (1112)		1138 (1542)
46	30	418 (566)	1119 (1516)		1547 (2096)

*Use 75% of the specified torque value for plated fasteners. Use 85% of the specified torque values for lubricated fasteners.

Notes



New PECO, Inc.
10 Walden Dr | Arden, North Carolina 28704
Phone: 1-800-438-5823 | 828-684-1234
Fax: 828-684-0858
Email: peco@lawnvac.com
Website: www.lawnvac.com