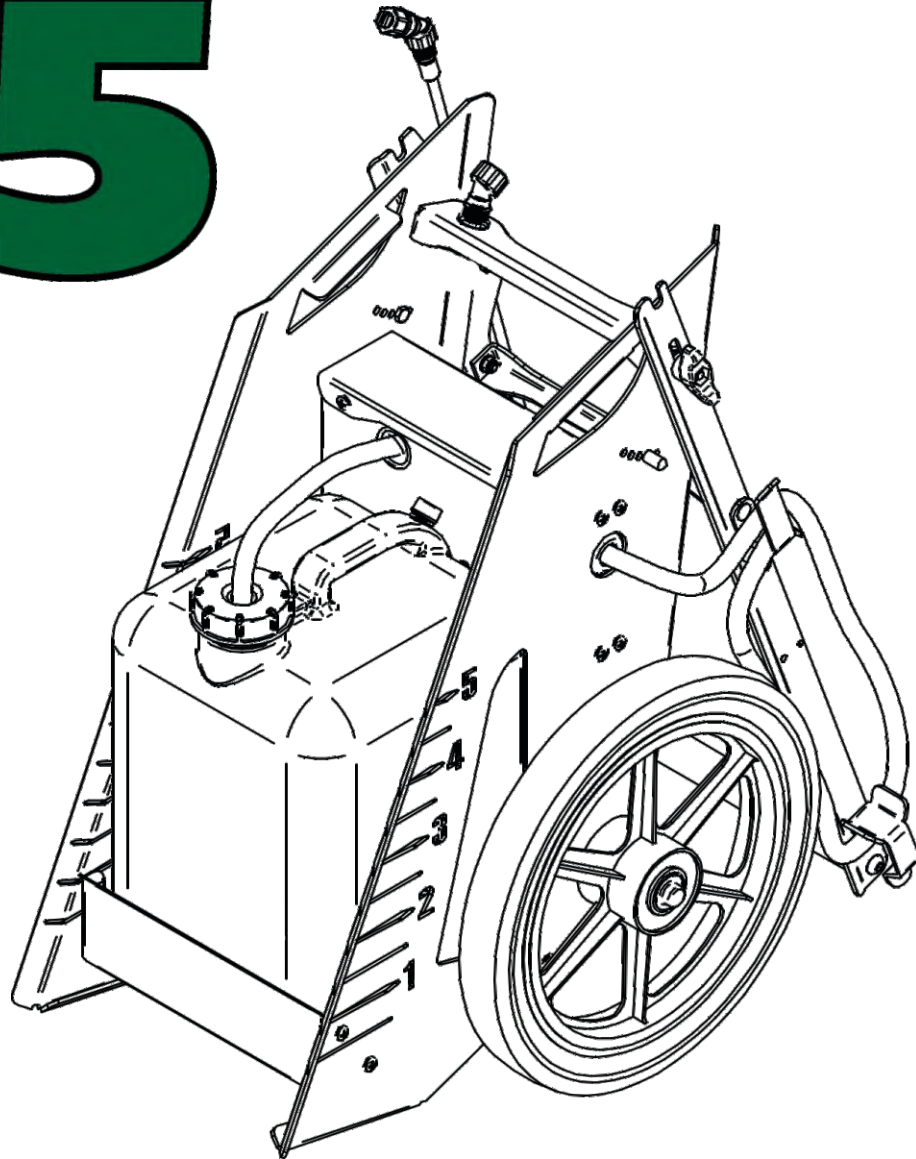




THE ORIGINAL POWER SPRAYER

Model# 12008

PS5



PS5 Power Sprayer

OPERATOR'S MANUAL

ASSEMBLY • OPERATION • MAINTENANCE

PECO POWER SPRAYER

TABLE OF CONTENTS

| SECTION | PAGE | SECTION | PAGE |
|--|------|---|-------|
| Safety ----- | 2 | 29" Stainless Steel Sprayer Wand Installation ----- | 10 |
| Warranty ----- | 3 | Sprayer Wire Harness ----- | 11 |
| I INTRODUCTION AND DESCRIPTION ----- | 4 | Exploded Views & Parts List ----- | 12-14 |
| Introduction ----- | 4 | Overall Parts List ----- | 15 |
| Description ----- | 4 | Safety Decals ----- | 16 |
| II INSTALLATION FOR USE ----- | 5 | III OPERATING INSTRUCTIONS ----- | 17 |
| Sprayer Pump Installation ----- | 5 | General Safety ----- | 17 |
| Battery Installation ----- | 5 | Battery & Charging Information ----- | 17 |
| Component Back Installation ----- | 6 | Sprayer Care ----- | 17 |
| Component Top Installation ----- | 7 | Storage ----- | 17 |
| Right & Left Chassis Installation ----- | 7 | V PARTS AND SERVICE ----- | 17 |
| Power Sprayer Handle Assy Installation ----- | 8 | Parts And Service Information ----- | 17 |
| Power Sprayer Handle Assy Adjustment ----- | 9 | Viton's Chemical Compatibility ----- | 18-20 |
| Power Sprayer Wheel Installation ----- | 9 | Additional Option ----- | 21 |

SAFETY

1. Read the operator's manual carefully and familiarize yourself with the proper use of your sprayer
2. Know the controls and how to use them properly. **READ THE OPERATOR'S MANUAL!**
3. Always inspect your sprayer thoroughly before and after each use. Check to be sure hose is securely attached and in good condition before use.
4. Use special care when spraying near electrical installations.
5. Keep the work area clear of people and animals.
6. Never use the sprayer during windy conditions.
7. Wear protective gear and clothing when filling, using and cleaning the sprayer.
8. Always release pressure in the pump prior to filling, cleaning or servicing the sprayer.
9. Before opening a container of the spray material carefully read, understand and follow all instructions provided by the spray material's manufacturer
10. Do not eat, drink or smoke while spraying.
11. Thoroughly wash face and hands with soap and water after spraying.
12. Do not transfer spray materials to other containers, especially food and/or drink containers.
13. Keep spray materials locked up and out of reach of children and animals.
14. Use only original manufacture's replacement parts.

PECO LIMITED WARRANTY FOR NEW PRODUCTS

New PECO, Inc. extends the following warranties to the ORIGINAL PURCHASER of each New PECO, Inc. consumer product purchased from one of our Dealers or directly from New PECO, Inc., subject to the following limitations:

A. ITEMS COVERED UNDER WARRANTY

1. **PRODUCT WARRANTY** – Any part or parts which are deemed defective in material or workmanship, as delivered to the original purchaser, will either be repaired or replaced, as New PECO, Inc. elects, without charge for parts or labor, if the defect appears within 12 months from the date of purchase of the product to the Original Purchaser.
2. **PARTS REPLACED DURING WARRANTY** – Any New PECO, Inc. part which is furnished in performance of this warranty and is defective in material or workmanship as delivered to the purchaser will be repaired or replaced, as New PECO, Inc. elects, before the expiration of the original warranty period.

B. WARRANTY DISTINCTIONS

1. **RESIDENTIAL** - Products put to a personal use around a single household or residence are considered Residential. Products designated as “Residential” are warrantied for 12 months from the date of purchase of the product, to the ORIGINAL PURCHASER with proof of purchase, when used for or in residential applications.
2. **COMMERCIAL** – Products put to any business use (agricultural, commercial or industrial) or used at multiple locations are considered Commercial. Products designated as “Commercial” are warrantied for 12 months from the date of purchase of the product, to the ORIGINAL PURCHASER with proof of purchase, when used for or in commercial applications. Products designated as “Residential” are warrantied for 90 days from the date of purchase of the product, to the ORIGINAL PURCHASER with proof of purchase, when used for or in Commercial applications.
3. **RENTAL** – Products used for Rental or Lease Purposes are warrantied for 45 days from date of purchase of the product, to the ORIGINAL PURCHASER with proof of purchase, when used for or in a rental business.

C. ITEMS NOT COVERED BY NEW PECO WARRANTY

1. **ENGINES & BATTERIES:** Engines and Batteries attached to New PECO, Inc. products are covered under their respective separate manufacturer warranties and those companies must be contacted directly to file a warranty claim. Briggs & Stratton: https://www.briggsandstratton.com/na/en_us/support/warranty.html
2. **UNAPPROVED ALTERATION OR MODIFICATION:** All obligations of New PECO, Inc. under this warranty shall be terminated if products are altered or modified in any way not approved by New PECO, Inc.
3. **ACCIDENTS & NORMAL MAINTENANCE:** This warranty covers ONLY manufacturers defective material and workmanship. It does not cover depreciation or damage caused by normal wear & tear, accident, improper maintenance, misuse or abuse of products. New PECO, Inc. products must be operated and maintained in accordance with the instructions furnished in the manuals. The cost of normal maintenance and normal replacement of service items such as belts, cutting blades, hoses, bags, etc., which are not defective shall be paid for by the purchaser.
4. **NO SERVICE CENTER WARRANTY:** The selling Service Center/Dealer makes no warranty on his own on any item warranted by New PECO, Inc. unless he delivers to purchaser a separate written warranty certificate specifically warranting the item. The Service Center or Dealer has no authority to make any representation or promise on behalf of New PECO, Inc. or to modify the terms of the original warranty in any way.
5. **NO REPRESENTATIONS ADDITIONAL WARRANTIES, DISCLAIMER:** Neither New PECO, Inc. nor any company affiliated with New PECO, Inc. makes any warranties, representations or promises as to the quality of performance of its products other than those set forth herein. Except as described above, New PECO, Inc. makes no other warranties **AND SPECIFICALLY DISCLAIMS ANY AND ALL IMPLIED WARRANTIES OF FITNESS AND MERCHANTABILITY.**
6. **REMEDIED EXCLUSIVE:** The only remedies the purchaser has in connection with the breach or performance of any warranty on New PECO, Inc. consumer products are set forth above. In no event will New PECO, Inc. be liable for special incidental or consequential damages.

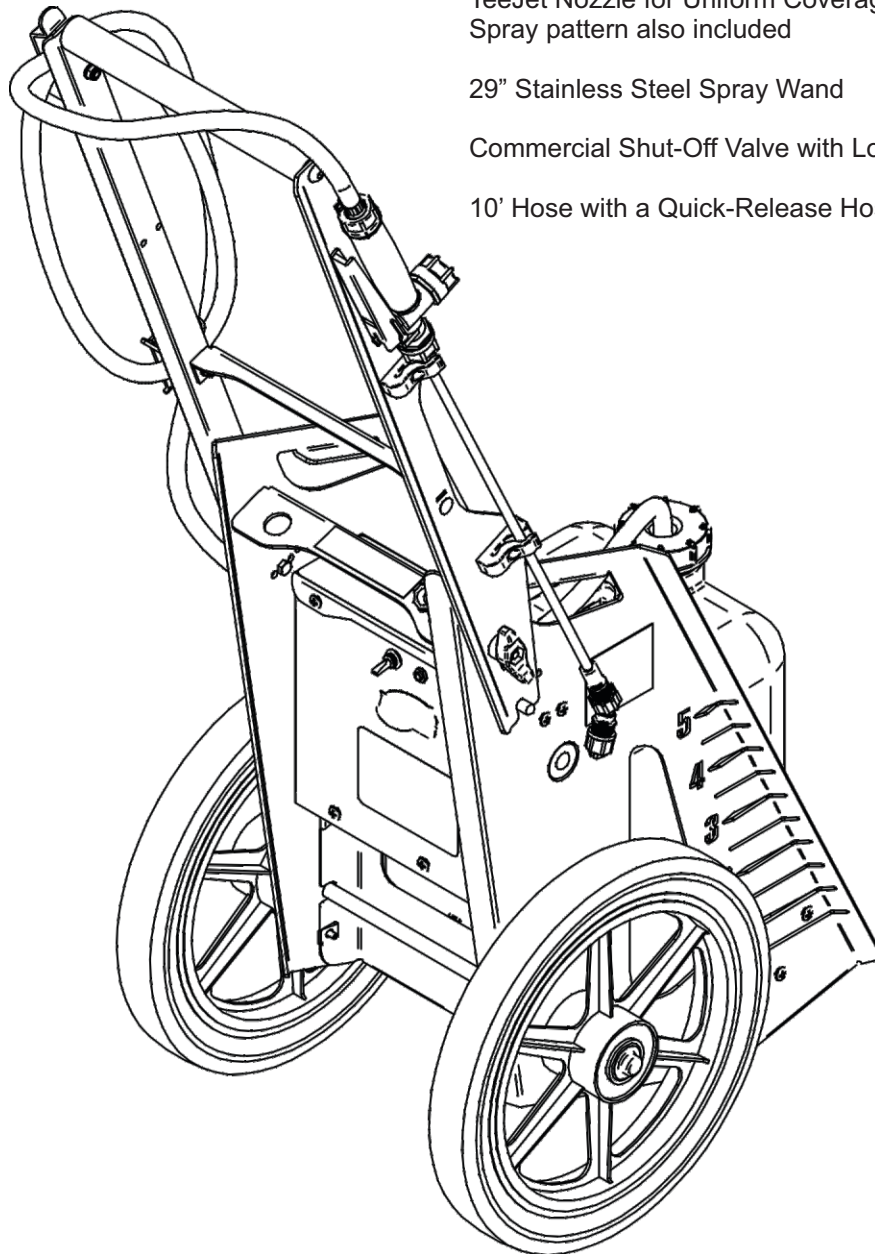
Warranty service is available through your local authorized service dealer or distributor. If you do not know the dealer or distributor in your area, search by your zip code on www.lawnvac.com or contact our Sales Department at New PECO, Inc. 800-438-5823 or email Sales@lawnvac.com.

SECTION 1 - INTRODUCTION & DESCRIPTION

Introduction

Thank you for purchasing the PECO Power Sprayer. Your new PECO Sprayer has been engineered and manufactured to PECO's high standards for safety, quality, dependability and ease of operation.

No need for pumping or lugging with the all new PS5 Power Sprayer. It's completely self-contained and rolls easily over lawns and through gardens. The spray wand is always right at hand with multiple spray patterns to fit the job. Spray from flat or a fine mist adjustable to a 40' stream. A full charge on the battery can last for 6 hours, and the wide-mouthed illuminated container can hold up to five gallons. The sprayer handle folds for easy transport & storage.



Description

Self-contained 12-volt Electric Sprayer

14" Wheels and Lightweight Aluminum Cart with Folding Handle for easy Transport & Storage

40psi Electric Pump runs up to 6 hours on a single charge

Viton Valves / Santoprene Diaphragm

Illuminated Wide-Mouth 5-Gallon Container

Standard Adjustable Nozzle Spray adjusts from a fine mist to a 40 foot Solid Stream

TeeJet Nozzle for Uniform Coverage throughout the Flat Spray pattern also included

29" Stainless Steel Spray Wand

Commercial Shut-Off Valve with Lock On / Off Features

10' Hose with a Quick-Release Hose Hanger

Section II - INSTALLATION FOR USE

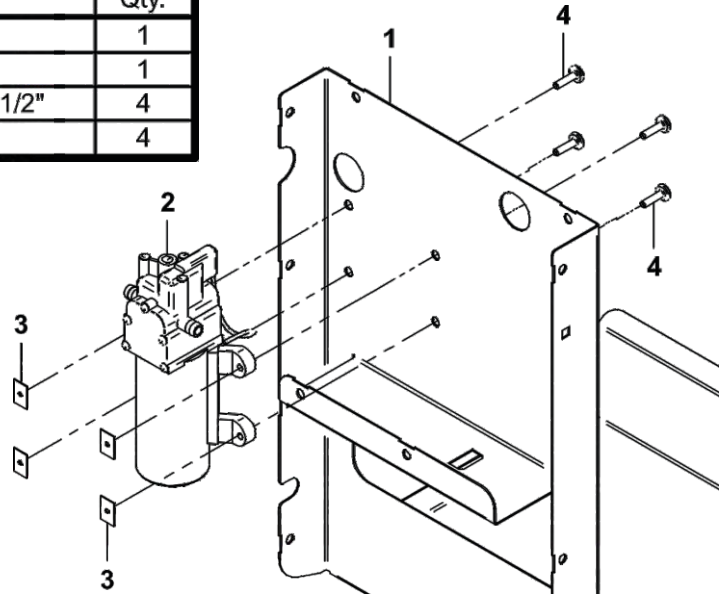
Sprayer Pump Installation

Align and position the Sprayer Pump (Item #2) to the (4) mount holes on the Chassis Body (Item #1) as shown in Figure A. Secure the Sprayer Pump by using (4) #10-12 Flat Tinnerman Nuts (Item #3) and (4) #10-12 x 3/4" Blunt Tip Sheet Metal Screws (Item #4). Refer to Figure A.

Note: Some parts and part features have been hidden from view for visual clarity.

Figure A

| Item # | Part # | Desc. | Qty. |
|--------|--------|---------------------------------------|------|
| 1 | C0113 | Chassis Body | 1 |
| 2 | P0210 | ELECTRIC SPRAYER PUMP | 1 |
| 3 | K0029 | #10-12 Flat Tinnerman Nut 3/4" x 1/2" | 4 |
| 4 | K1092 | #10-12 x 3/4" Blunt Tip SMS | 4 |



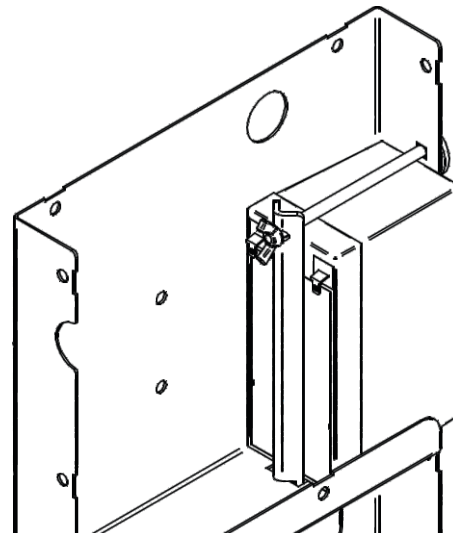
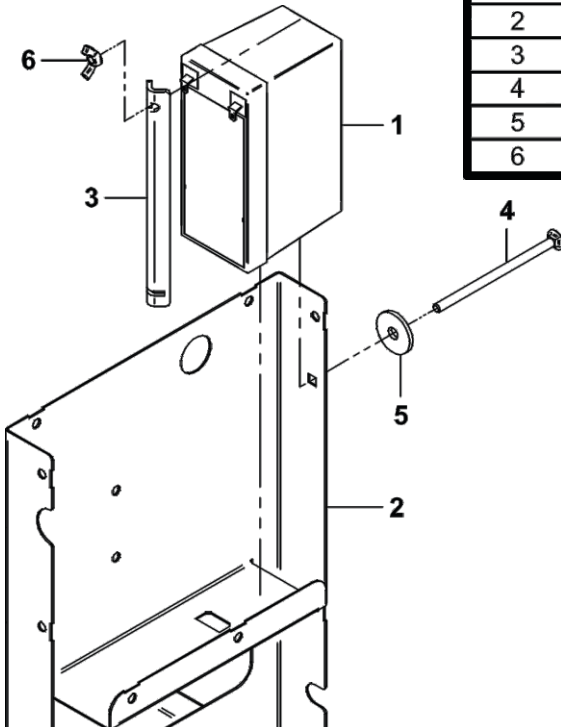
Battery Installation

Position the Power Sprayer Battery (Item #1) vertically, as shown in Figure A, to the right side of the Sprayer's Chassis Body (Item #2). Secure the Power Sprayer Battery by using (1) Battery Clamp (Item #3), (1) 1/4"-20 x 4-1/2" Carriage Bolt (Item #4), (1) Heavy Washer (Item #5) and (1) 1/4"-20" Wing Nut (Item #6). Refer to figure B.

Note: Some parts and part features have been hidden from view for visual clarity.

Figure B

| Item # | Part # | Desc. | Qty. |
|--------|--------|---|------|
| 1 | J1201 | Power Sprayer Battery | 1 |
| 2 | C0113 | Chassis Body | 1 |
| 3 | C0105 | Battery Clamp | 1 |
| 4 | K1499 | Carriage Bolt / 1/4"-20 x 4-1/2" All Thd. | 1 |
| 5 | K0505 | Washer / Ex-Heavy Fender | 1 |
| 6 | K1129 | 1/4"-20 Wing Nut | 1 |



Component Back Installation

Once your Sprayer Pump & Power Sprayer Battery has been installed, install the aluminum Component Back (Item #2) to the Chassis Body (Item #1).

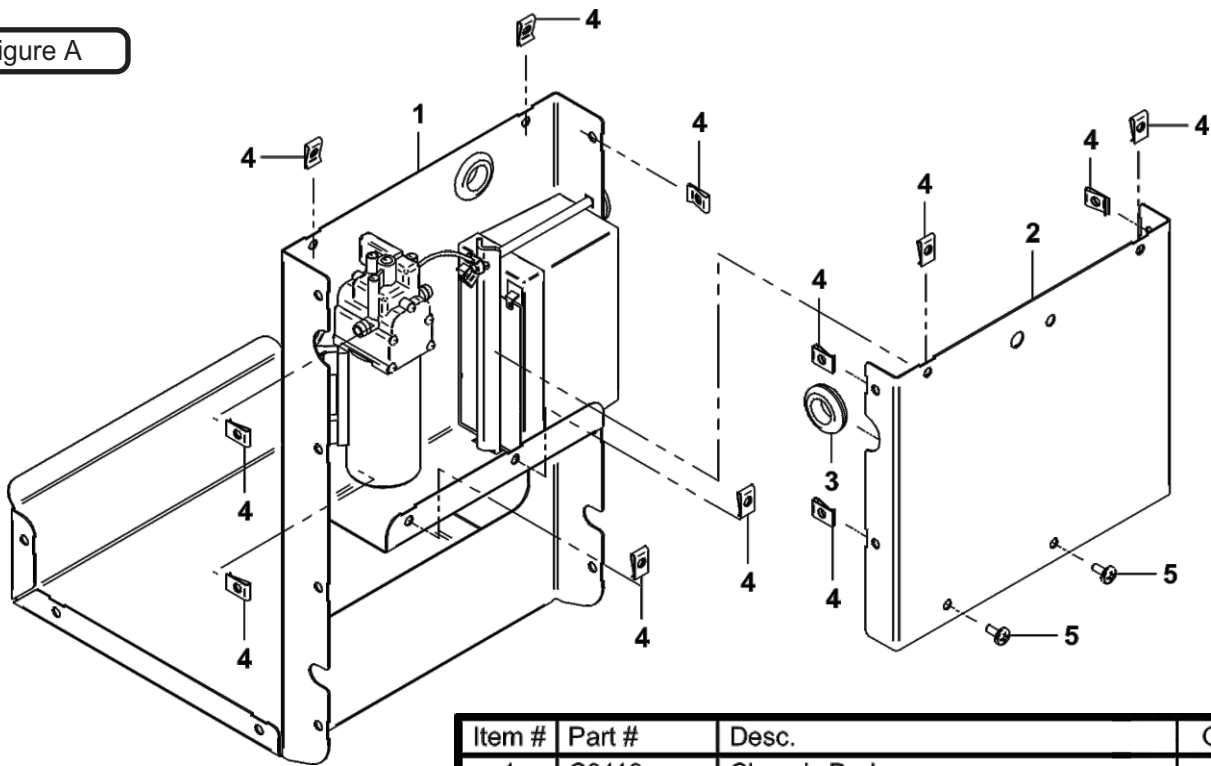
First, locate all bolt holes on the edge of both parts and install (12) Small Tinnerman Clips (Item #4). See Figure A.

Next, align the Component Back to the Chassis Body by aligning the (2) bottom bolt holes to those on the Chassis Body and securing the Component Back by using (2) #10-12 x 1/2" Tinnerman Screws (Item #5). See Figure A.

Finally, install (3) Grommets into the 1-1/8" Dia Holes located on the Front and Left side of the Chassis Body. See Figure B.

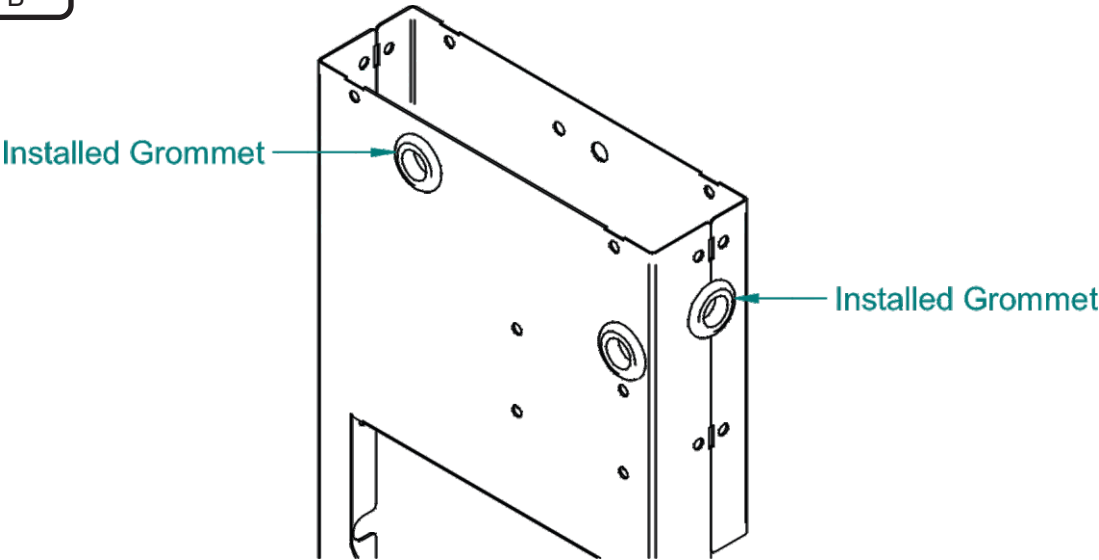
Note: Some parts and part features have been hidden from view for visual clarity.

Figure A



| Item # | Part # | Desc. | Qty. |
|--------|--------|-------------------------------|------|
| 1 | C0113 | Chassis Body | 1 |
| 2 | C0114 | Component Back | 1 |
| 3 | V0038 | GROMMET 3/4 ID x 1/16 GW | 3 |
| 4 | K0028 | Tinnerman Clip / Small | 12 |
| 5 | K1096 | #10-12 x 1/2" Tinnerman Screw | 2 |

Figure B



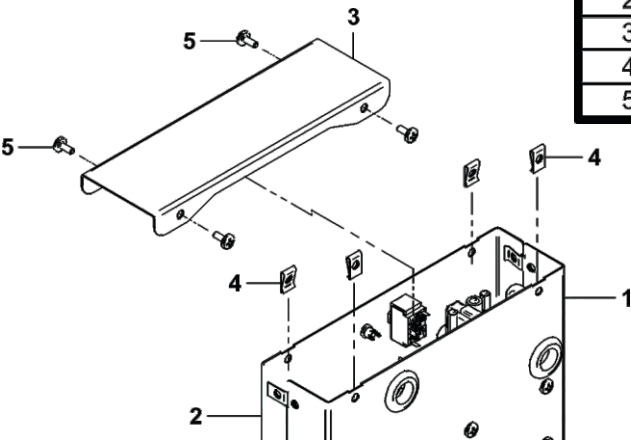
Component Top Installation

With the pre-installed Tinnerman Clip (Item #4) onto the Chassis Body (Item #1) and the Component Back (Item #2), install the Aluminum Component Top (Item #3) by aligning the Top over the Chassis Body and the Component Back by securing the Top by using (4) #10-12 x 1/2" Tinnerman Screws (Item #5). Refer to the Figure below.

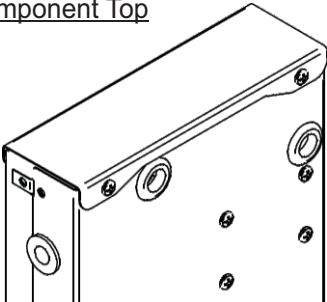
Note: Some parts and part features have been hidden from view for visual clarity.

Figure A

| Item # | Part # | Desc. | Qty. |
|--------|--------|-------------------------------|------|
| 1 | C0113 | Chassis Body | 1 |
| 2 | C0114 | Component Back | 1 |
| 3 | C0115 | Component Top | 1 |
| 4 | K0028 | Tinnerman Clip / Small | 4 |
| 5 | K1096 | #10-12 x 1/2" Tinnerman Screw | 4 |



Installed Component Top



Right & Left Chassis Installation

To install the Right Chassis (Item #1), first install (5) Small Tinnerman Clips (Item #4) to the Right side of the Chassis Body. Then Align the Right Chassis' bolt holes with the Tinnerman Clips and secure the Right Chassis by using (7) #10-12 x 1/2" Tinnerman Screws (Item #3). See Figure B.

To install the Left Chassis (Item #2), first install (5) Small Tinnerman Clips (Item #4) to the Left side of the Chassis Body. Then Align the Left Chassis' bolt holes with the Tinnerman Clips and secure the Left Chassis by using (9) #10-12 x 1/2" Tinnerman Screws (Item #3). See Figure C.

Note: Some parts and part features have been hidden from view for visual clarity.

Figure B

| Item # | Part # | Desc. | Qty. |
|--------|--------|-------------------------------|------|
| 1 | C0107 | Chassis Right | 1 |
| 2 | C0106 | Chassis Left | 1 |
| 3 | K1096 | #10-12 x 1/2" Tinnerman Screw | 16 |
| 4 | K0028 | Tinnerman Clip / Small | 16 |

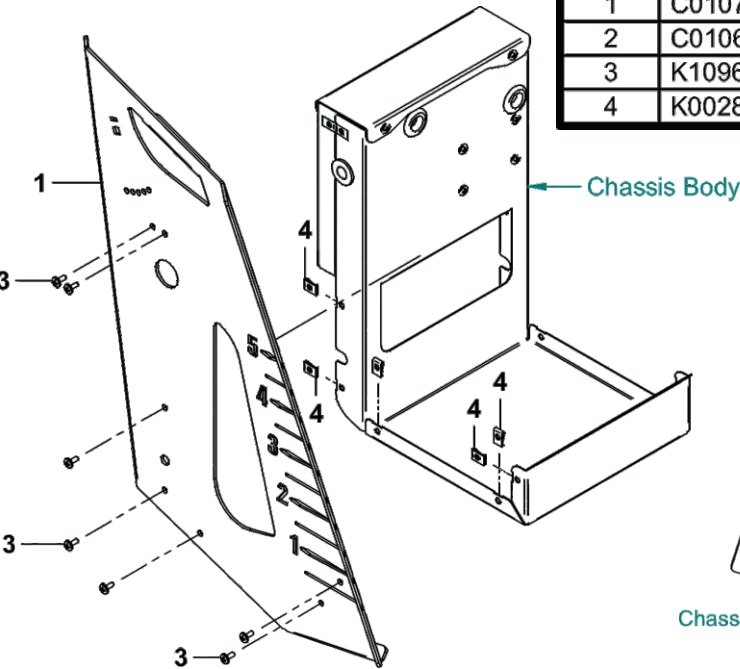
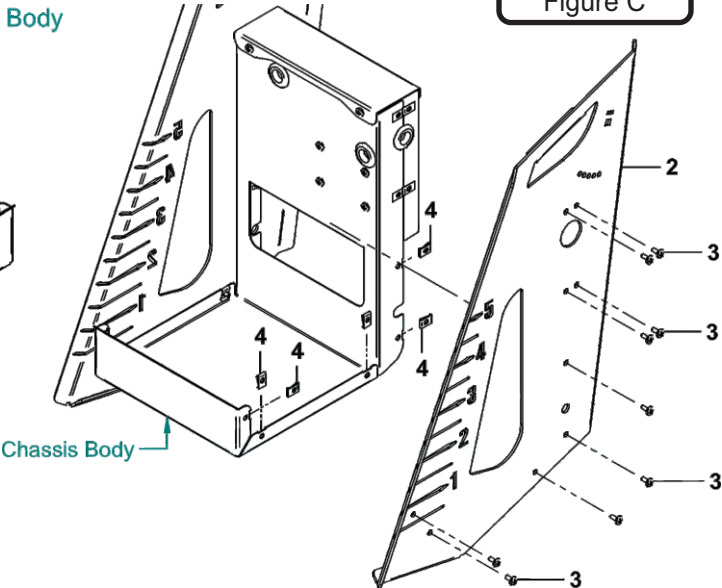


Figure C



Power Sprayer Handle Assembly Installation

Before installing the Power Sprayer Handle Assembly (Item #1), install (2) Locator Pin Nuts (Item #3) to either side of the Chassis by using (2) 1/4"-20 x 1/2" HHCS (Item #4). See Figure A.

Once the Locator Pin Nuts have been installed, position the Chassis Brace (Item #2) between the Left & Right Chassis as seen in Figure B. Align the Chassis Brace's bolt holes to those on the Left & Right Chassis keeping it positioned in place by using (2) 5/16"-18 x 1-1/4" Carriage Bolts (Item #6).

When the Chassis Brace is in place, place (2) 5/16" Flat Washers (Item #5) over the Carriage Bolt on the outside of the Chassis. Then Position the Power Sprayer Handle Assembly (Item #1) over Flat Washer and Carriage Bolt. Secure the Power Sprayer Handle Assembly by using (2) Wing Knobs (Item #7). Refer to Figure B below.

Note: Some parts and part features have been hidden from view for visual clarity.

| Item # | Part # | Desc. | Qty. |
|--------|--------|--|------|
| 1 | A2377 | Power Sprayer Handle Assy | 1 |
| 2 | C0108 | Chassis Brace | 1 |
| 3 | B4251 | 1/4"-20 Locator Pin Nut | 2 |
| 4 | K1105 | 1/4"-20 x 1/2" HHCS | 2 |
| 5 | K0042 | Flat Washer 5/16" / .875 OD x .380 ID x .075 T | 2 |
| 6 | K1146 | 5/16"-18 x 1-1/4" Carriage Bolt | 2 |
| 7 | J0018 | Wing Knob / 5/16-18 Thru Nut | 2 |

Figure A

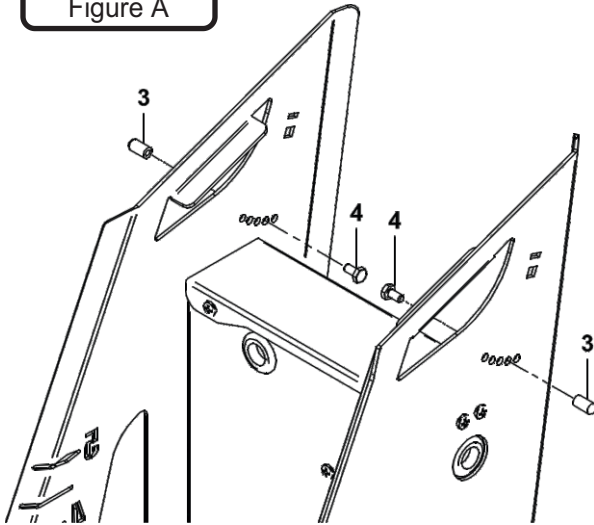
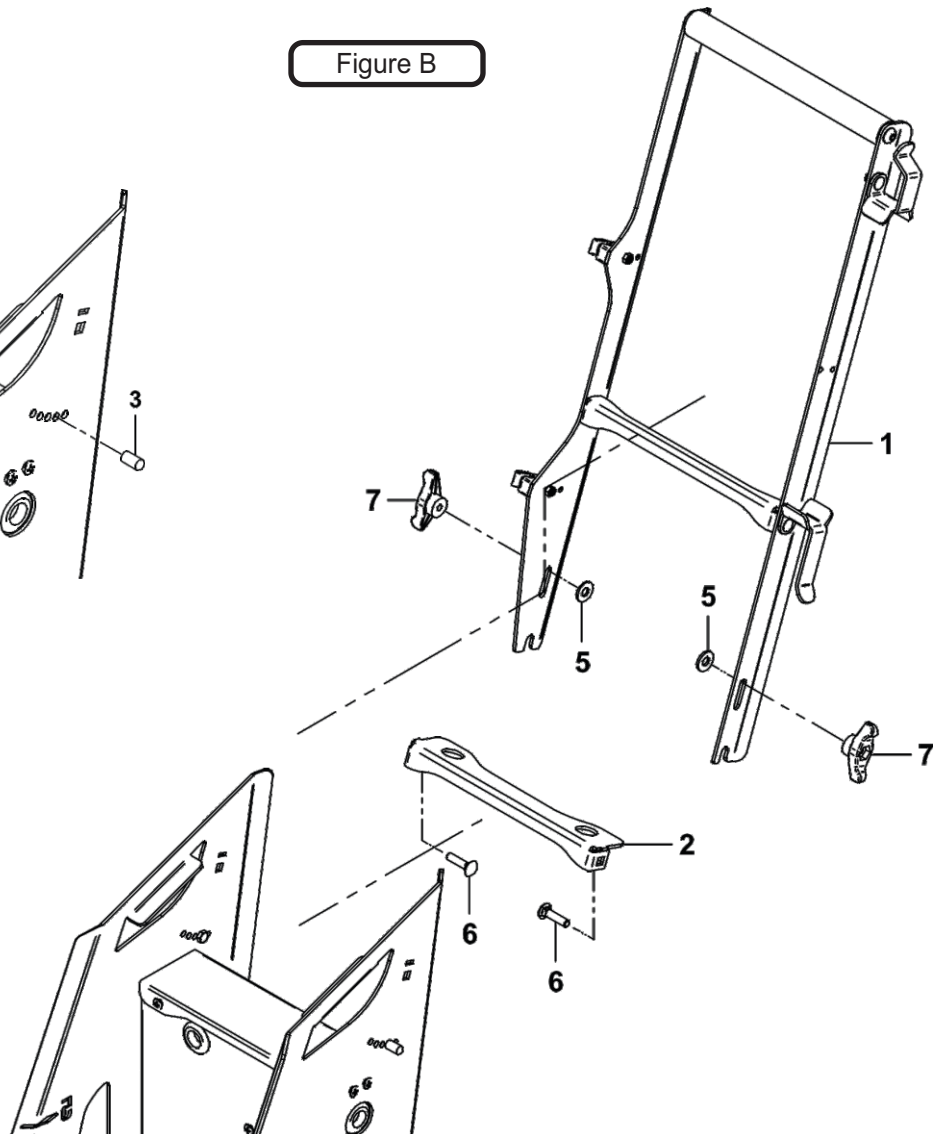


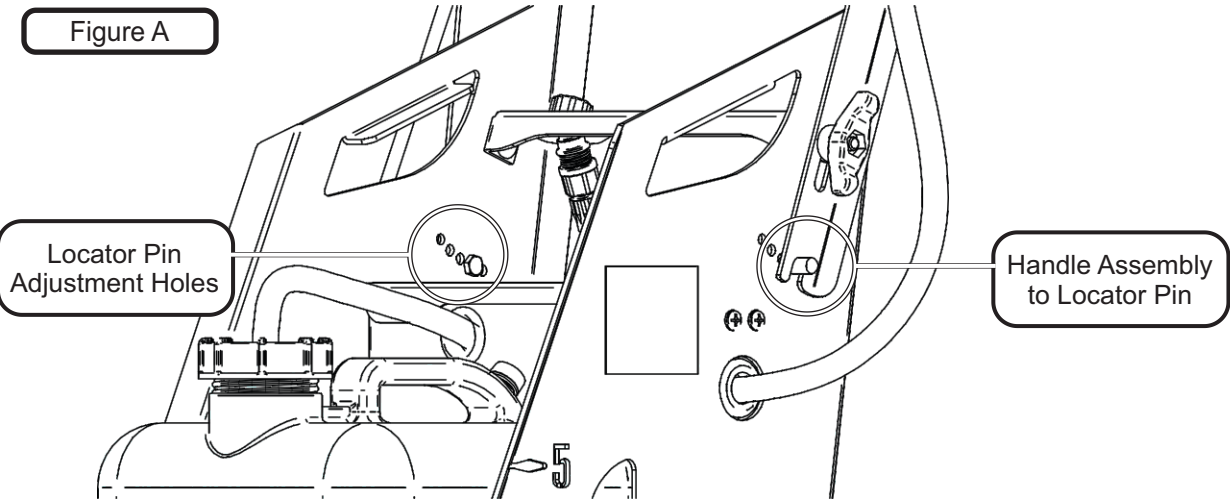
Figure B



Power Sprayer Handle Assembly Adjustment

The Power Sprayer Handle Assembly P#(A2377) position can be adjusted to lower or raise the Handle by moving the (2) Locator Pin Nuts P#(B4251) to the different set of holes. See Figure A below.

Note: Some parts and part features have been hidden from view for visual clarity.



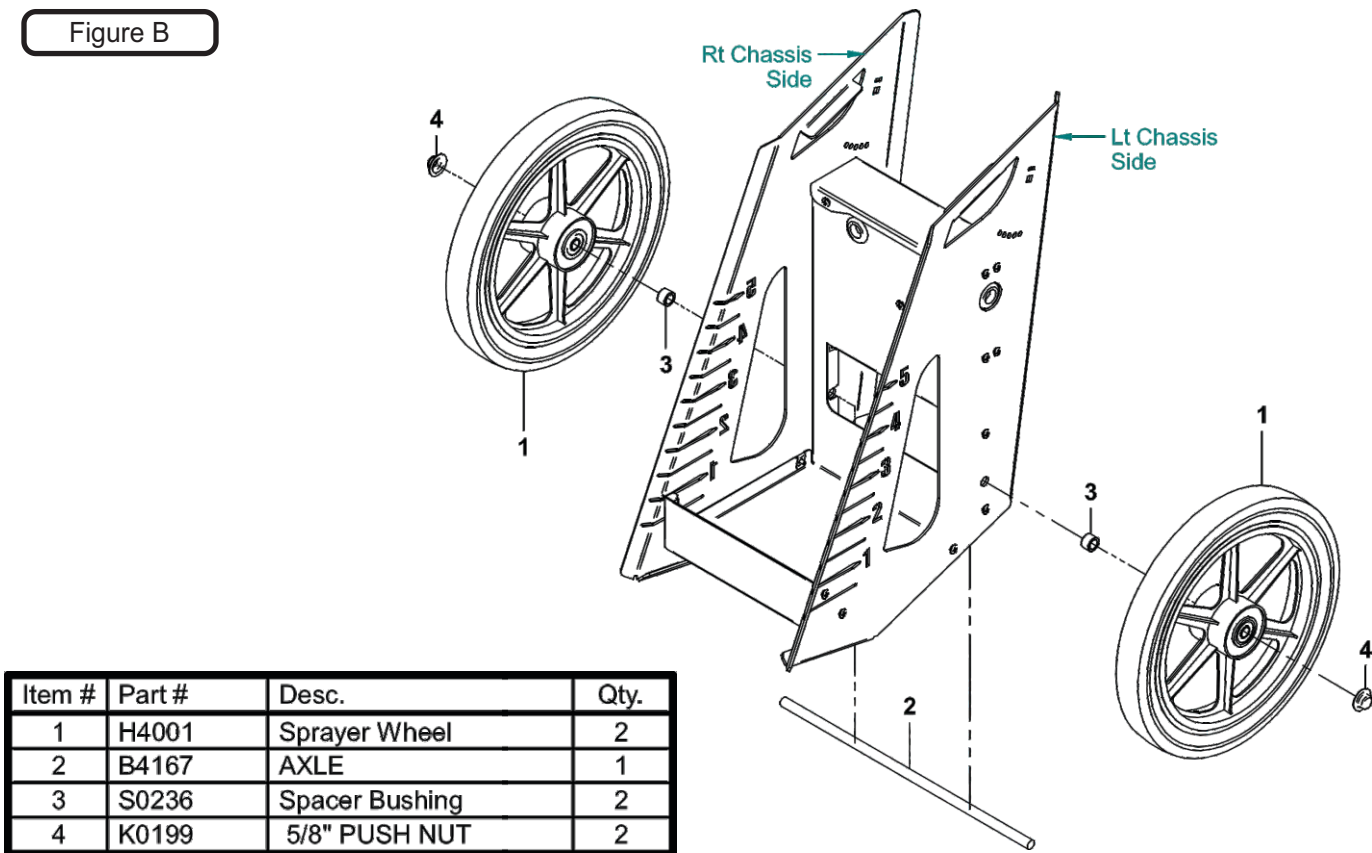
Sprayer Wheel Installation

Before installing the Sprayer Wheels (Item #1), install the Axle (Item #2) by passing it through the through hole of both the Left & Right Chassis. Refer to Figure A.

Next, place a Spacer Bushing (Item #3) on either side of the Axle outside of the Left & Right Chassis.

Once, the Spacer Bushing is in place, slide the Sprayer Wheel over the Axle and secure the Sprayer Wheel by using (1) 5/8" Push Nuts (Item #4) PER side. Refer to Figure A below.

Note: Some parts and part features have been hidden from view for visual clarity.

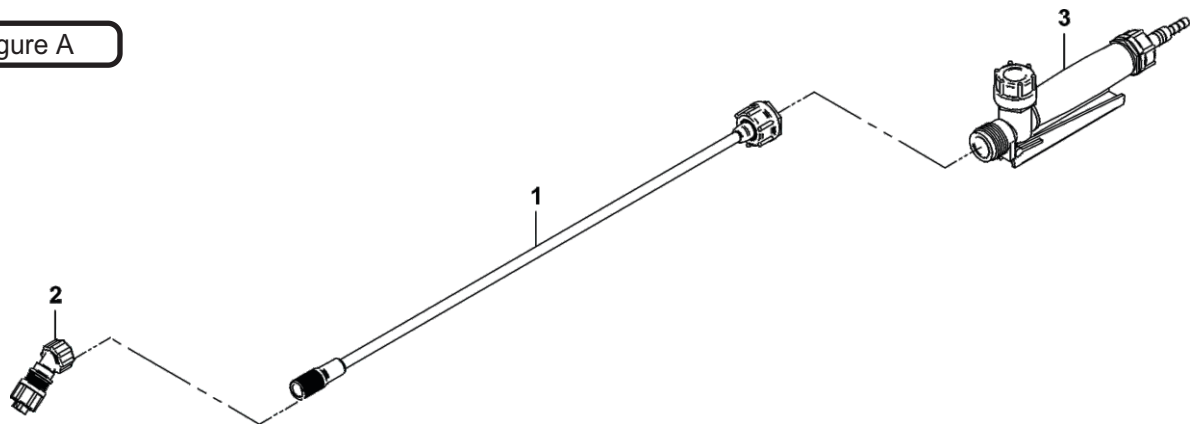


29" Stainless Steel Sprayer Wand Assembly

Your Stainless Steel Sprayer Wand Assembly will come installed with a standard Flat Nozzle (Item #2), there will be a secondary Elbow Nozzle P#(J1205) available as shown in Figure B.

When switching out your Sprayer Nozzle, you can store whichever one you're not using onto the Chassis Brace as shown in Figure C.

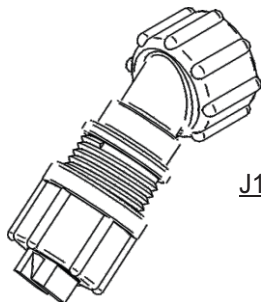
Figure A



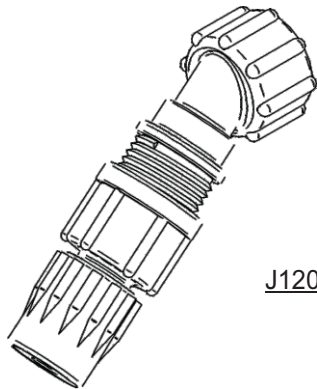
| Item # | Part # | Desc. | Qty. |
|--------|--------|------------------------------------|------|
| 1 | J1204A | Sprayer / 29" Stainless Steel Wand | 1 |
| 2 | J1204B | Sprayer / Flat Nozzle / TeeJet | 1 |
| 3 | J1204C | Sprayer / Handle | 1 |

Figure B

Sprayer Nozzle Types

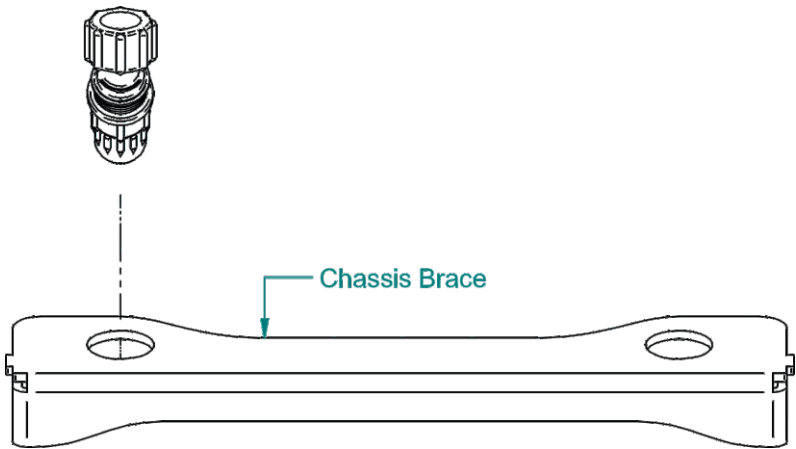


J1204B Flat Nozzle (Standard)



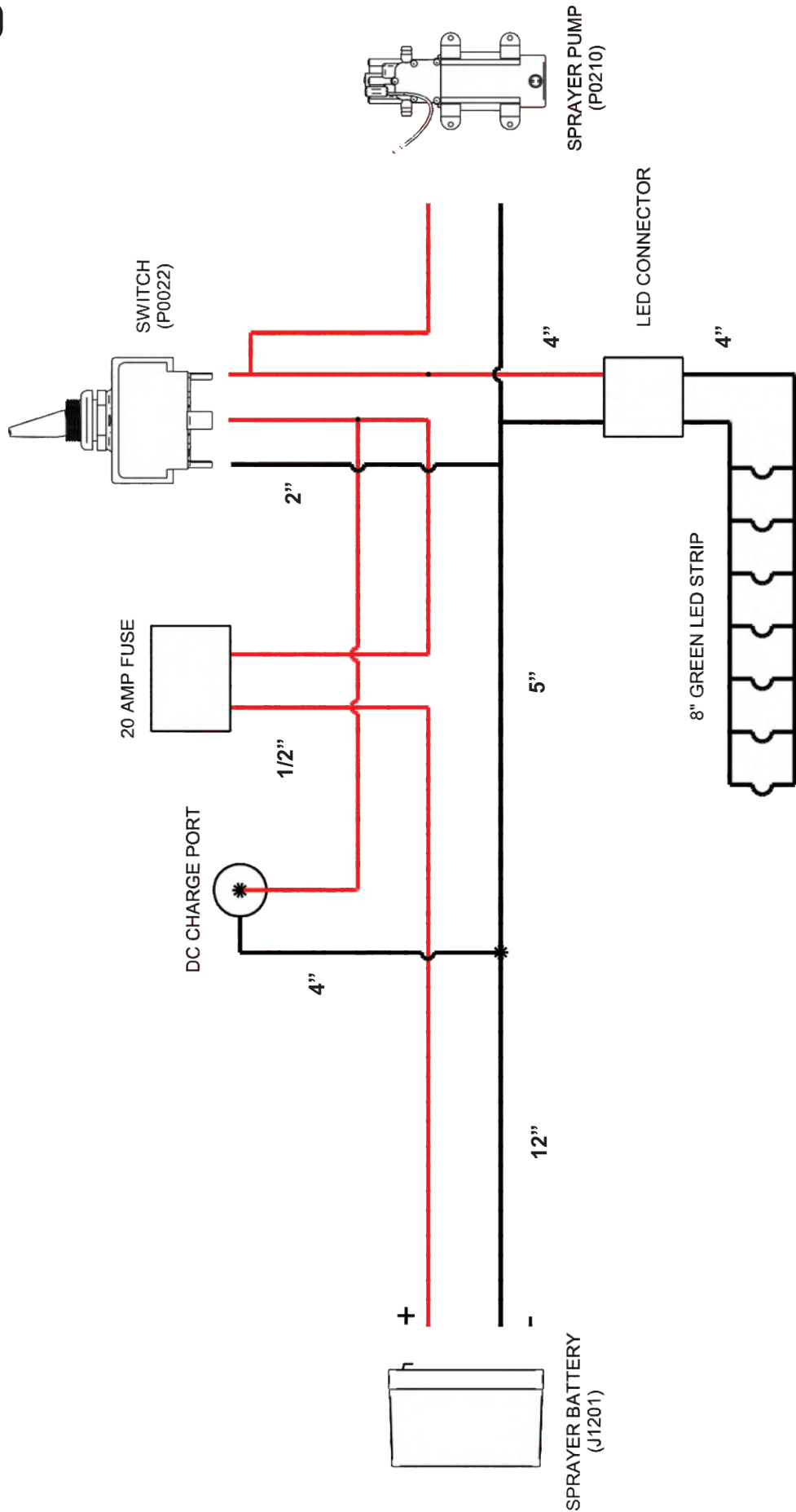
J1205 Elbow Nozzle (Secondary)

Figure C



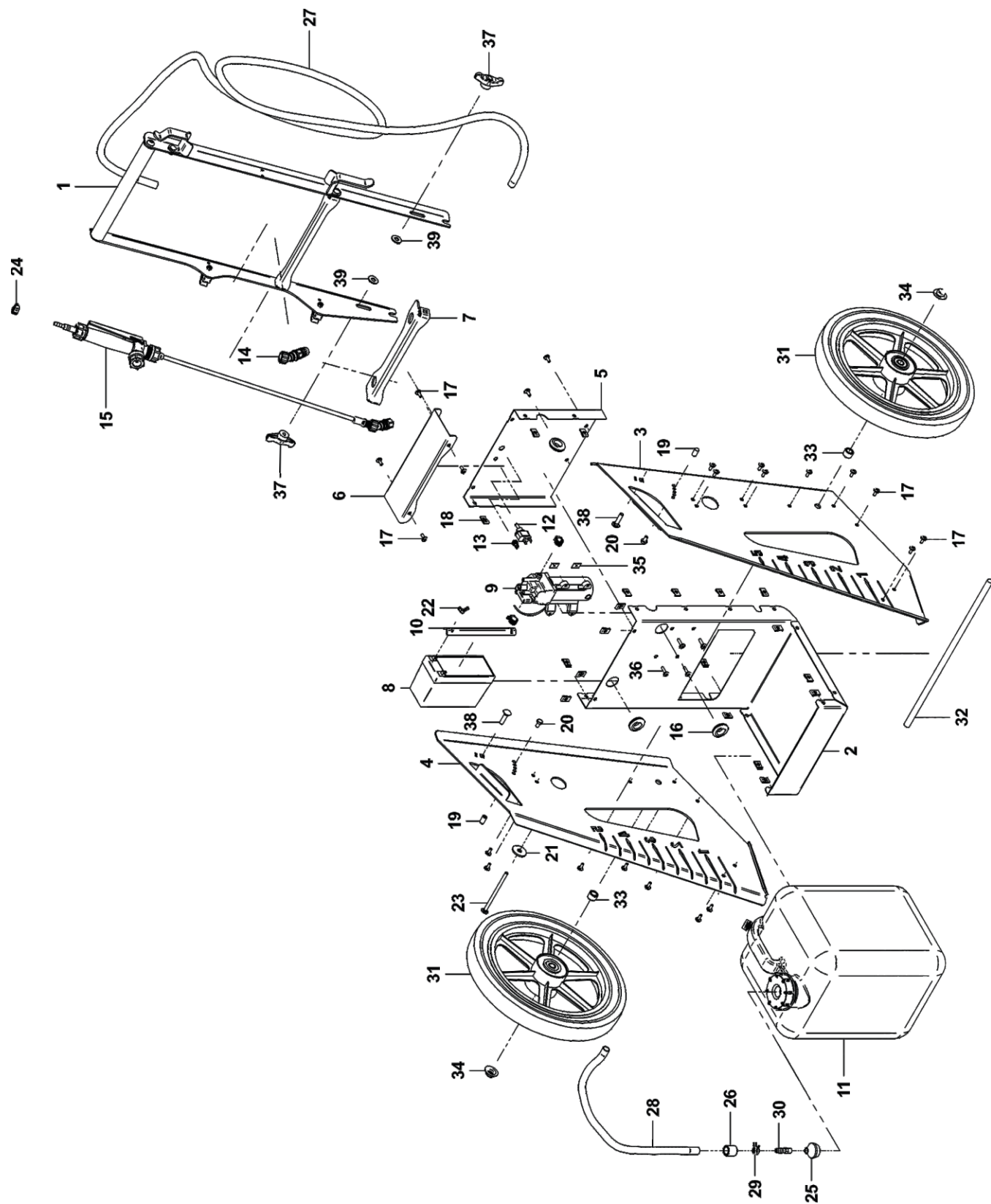
Sprayer Wire Harness

Figure B



Note: The Wiring Diagram is not drawn to scale or scaled correctly, the dimensions are intended to be used as a reference

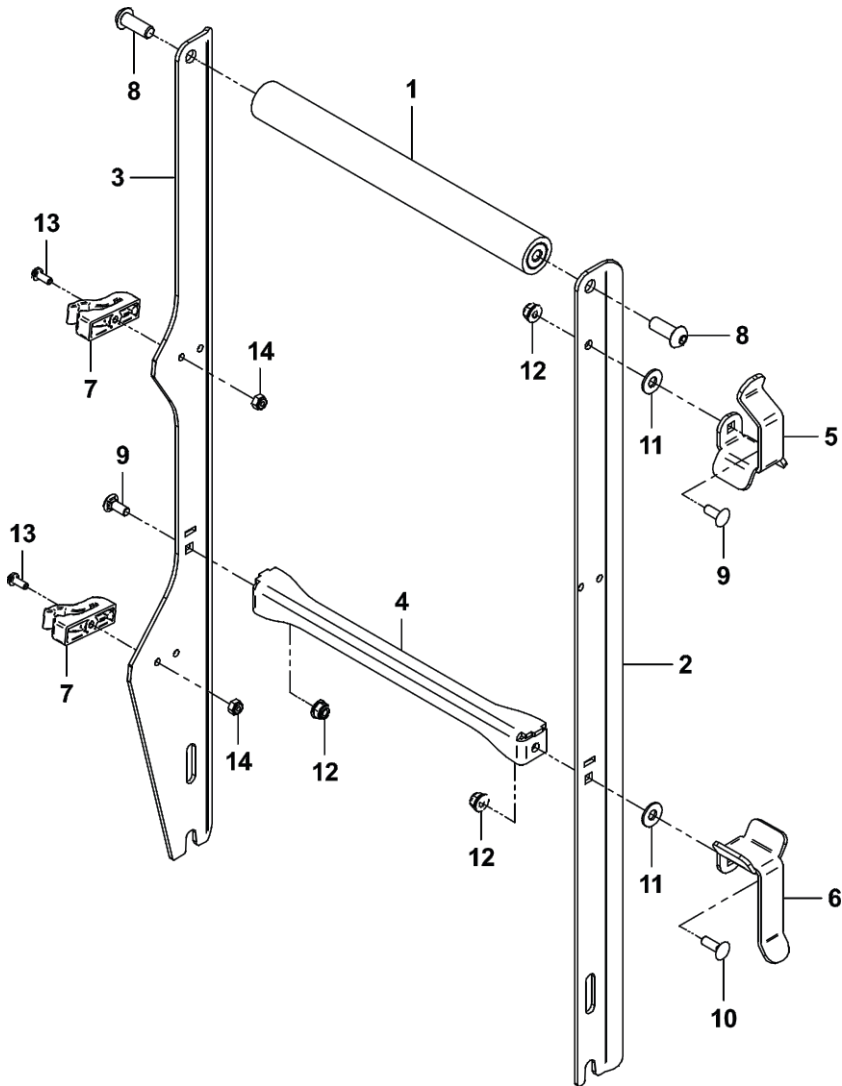
12008 Power Sprayer Exploded Parts View



12008 Power Sprayer Exploded Parts List

| Item # | Part # | Desc. | Qty. |
|--------|--------|--|------|
| 1 | A2377 | Power Sprayer Handle Assy | 1 |
| 2 | C0113 | Chassis Body | 1 |
| 3 | C0106 | Chassis Left | 1 |
| 4 | C0107 | Chassis Right | 1 |
| 5 | C0114 | Component Back | 1 |
| 6 | C0115 | Component Top | 1 |
| 7 | C0108 | Chassis Brace | 1 |
| 8 | J1201 | Power Sprayer Battery | 1 |
| 9 | P0210 | ELECTRIC SPRAYER PUMP | 1 |
| 10 | C0105 | Battery Clamp | 1 |
| 11 | A2324 | 5 Gallon Tank Assembly / Power Sprayer | 1 |
| 12 | J2001 | Power Toggle Switch | 1 |
| 13 | P0211 | CHARGING PORT | 1 |
| 14 | J1205 | Sprayer / Elbow Nozzle | 1 |
| 15 | J1204 | 29" Stainless Steel Sprayer Wand Assembly | 1 |
| 16 | V0038 | GROMMET 3/4 ID x 1/16 GW | 3 |
| 17 | K1096 | #10-12 x 1/2" Tinnerman Screw | 22 |
| 18 | K0028 | Tinnerman Clip / Small | 22 |
| 19 | B4251 | 1/4"-20 Locator Pin Nut | 2 |
| 20 | K1105 | 1/4"-20 x 1/2" HHCS | 2 |
| 21 | K0505 | Washer / Ex-Heavy Fender | 1 |
| 22 | K1129 | 1/4"-20 Wing Nut | 1 |
| 23 | K1499 | Carriage Bolt / 1/4"-20 x 4-1/2" All Thd. | 1 |
| 24 | J0129 | THREADED HOSE CLAMP | 3 |
| 25 | J1309 | MESH STRAINER | 1 |
| 26 | S3315 | Spacer Bushing / .870 OD x .625 ID | 1 |
| 27 | F4001 | Sprayer Hose / 30" | 1 |
| 28 | F4005 | Sprayer Hose / 96" | 1 |
| 29 | J6007 | Hose Clamp / Sprayer | 1 |
| 30 | V1022 | HOSE ADAPTER | 1 |
| 31 | H4001 | Sprayer Wheel | 2 |
| 32 | B4167 | AXLE | 1 |
| 33 | S0236 | Spacer Bushing / 3/4" OD x 1/2" ID x 1/2" L | 2 |
| 34 | K0199 | 5/8" PUSH NUT | 2 |
| 35 | K0029 | #10-12 Flat Tinnerman Nut 3/4" x 1/2" | 4 |
| 36 | K1092 | #10-12 x 3/4" Blunt Tip SMS | 4 |
| 37 | J0018 | Wing Knob / 5/16-18 Thru Nut | 2 |
| 38 | K1146 | 5/16"-18 x 1-1/4" Carriage Bolt | 2 |
| 39 | K0042 | Flat Washer 5/16" / .875 OD x .380 ID x .075 T | 2 |

Exploded Parts View



| Item # | Part # | Desc. | Qty. |
|--------|--------|--|------|
| 1 | A2337 | Handle w/ Grip Assembly | 1 |
| 2 | C0110 | Handle Arm Left / Power Sprayer | 1 |
| 3 | C0111 | Handle Arm Right / Power Sprayer | 1 |
| 4 | C0109 | Handle Brace | 1 |
| 5 | C0117 | Hose Hanger Upper | 1 |
| 6 | C0116 | Hose Hanger Lower | 1 |
| 7 | V0061 | Wand Clip | 2 |
| 8 | K1520 | 3/8"-16 x 1" Hex Drive Socket Cap Screw / Zinc | 2 |
| 9 | K1010 | 1/4"-20 x 5/8" Carriage Bolt | 2 |
| 10 | K1471 | Carriage Bolt 1/4"-20 x 3/4" | 1 |
| 11 | K0037 | Flat Washer / 1/4" (.75 OD x .312 ID x .060 T) | 2 |
| 12 | K2014 | 1/4"-20 Ny-Flange Lock Nut | 3 |
| 13 | K1064 | 10-24 x 1/2" Phillips PHMS | 2 |
| 14 | K1068 | 10-24 Nyloc Nut | 2 |



Unit Model #: 12008

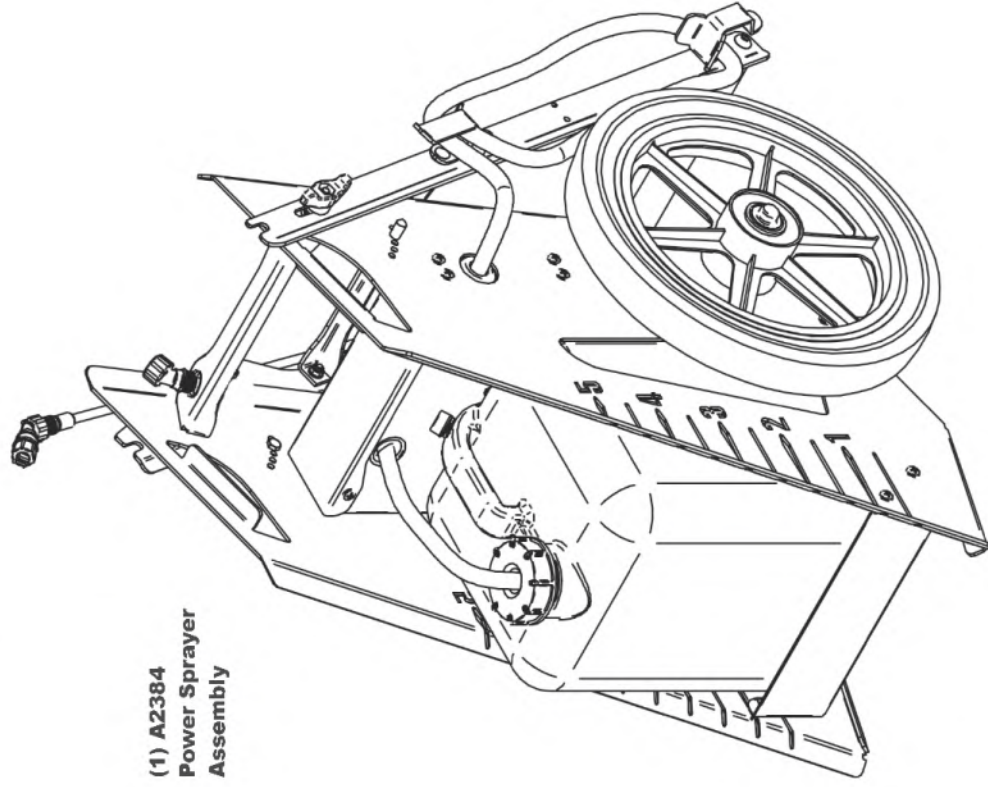
Description: Power Sprayer - 5 Gallon

Revision: 0 - Initial Release 2021

Owner's Manual: Q0582

Model Year: 2021 -Current

☐ **A2384 Power Sprayer**



(1) A2384
Power Sprayer
Assembly



(1) Q0582
Owner's Manual

SAFETY DECALS

To promote safe operation, New PECO, Inc. supplies safety decals on all products manufactured. Damage can occur to safety decals either through shipment, use or reconditioning. Contact your local Service Center for replacement decals.



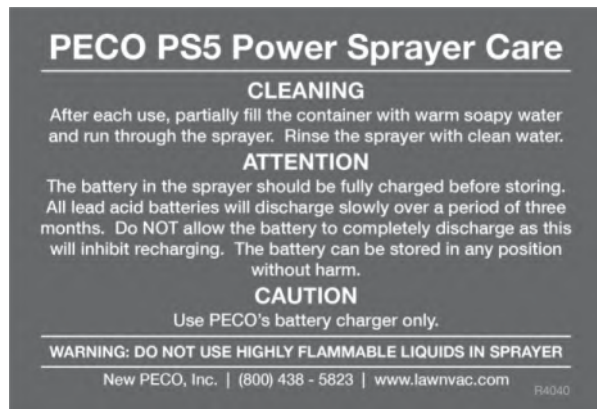
(1) R1106
Decal / PECO Logo



(1) R0056
Decal / Designed &
Built in the USA



(2) R1103
Decal / PS5 Power Sprayer



(1) R4040
Label / Sprayer Care



(2) R0054
Decal / PS5 Logo

OPERATING INSTRUCTIONS III

1. After flipping the switch into the ON position, squeeze wand handle to allow air pressure in hose to be released (make sure the strainer is completely submerged).
2. Hold wand handle until liquid begins to flow and all air bubbles are out of the hose.
3. Always turn the sprayer off before re-filling the container.

Be sure to loosen or remove the vent cap from the smaller tank opening to avoid creation of a vacuum inside of tank.

A unit that has been used with herbicides should never be used to spray insecticides, unless the sprayer has been properly cleaned and all other chemicals neutralized. Failure to do this could cause you to kill plants that have been sprayed. Consult with the manufacturer of the chemicals in use to obtain proper instructions.

BATTERY & CHARGER INFORMATION

Fully Charge Before First-Time Usage:

- * Plug Charger into wall socket and plug opposite connecting end into Sprayer to begin battery charging.
- * Notice a "Green" & "Red" light located on Charger.
- * Once correctly plugged in, a steady "Red" light designates battery charging and a steady "Green" light designates battery charged.
- * Leave charger connected until a steady "Green" light is achieved before using sprayer.

The new battery charging system eliminates user error and will automatically stop charging once a full charge is detected. Battery charging time will vary depending on power level remaining in battery. The battery will last up to 5 hours in between full charges. Only use charger provided to prevent overheating and permanent damage to the battery.

The battery life span is approximately 200 charges.

SPRAYER CARE

- A. This sprayer is made of the most chemical resistant materials available, but care must be taken to ensure product longevity. Immediate cleaning and proper maintenance after each use will eliminate most sprayer failures.
- B. Many chemicals can deteriorate pump parts if not rinsed clean after each use. Which solution you use will depend on the pesticides used. Always check the pesticide label for cleaning instructions.
- C. Clean pump thoroughly with a cleaning solution for 3 minutes. Rinse with clean soapy water for 2 minutes to remove cleaning solution.

* DO NOT USE BLEACH SOLUTION OR HIGHLY FLAMMABLE LIQUIDS SUCH AS GASOLINE OR PAINT THINNER IN SPRAYER.
- D. Soluble powders and diluted liquids may be used in the sprayer. Wet powder solutions tend to come out of solution, coating the inside of the pump. Wet powders must be washed out very thoroughly. Over a period of time, most chemicals will separate and cause a build up in the pump. Chemicals are absorbed by the plastic hoses and cannot be rinsed out after extended periods of time.

- E. Rinse thoroughly after each use.

STORAGE

Special care should be taken before storage of the sprayer. Fully re-charge the battery. Thoroughly rinse the pump, hoses and container with clean, soapy water.

Do NOT store sprayer with the pump pressurized or with spray solution in the tank.

PARTS AND SERVICE INFORMATION IV

PECO Power Sprayer owners should record the name and telephone number of their Service Center. Your Service Center will be happy to supply replacement parts, accessories, and do any service or repairs to your PECO Power Sprayer. If for any reason your Service Center is unable to service your PECO Power Sprayer or supply replacement parts, contact PECO and include the following information on the chart below.

DOCUMENT THE FOLLOWING INFORMATION FOR FUTURE REFERENCE

Unit Model Number: _____

Unit Serial Number: _____

Date of purchase: _____ / _____ / _____

Dealer/Distributor Name: _____

Address: _____ **State:** _____ **Zip:** _____

Phone Number: _____

Viton Chemical Compatibility

Your Power Sprayer comes equipped with Viton Valves. Viton is a synthetic rubber that resists many hydrocarbons, biodiesel and petro chemicals, but it is NOT compatible with ketones. DO NOT use substances such as acetone, esters, amines, organic acids, acetic acid, methyl ethyl ketone (MEK), ethyl acetate, etc. Use the chart below as reference to determine which chemical maybe compatible with your Power Sprayer.

Note: The information in the chart below is intended to be used ONLY as a guide in selecting appropriate chemical compatibility for your Power Sprayer with *Viton Valves*. Ratings of chemical behavior listed in the chart below were tested at a 48-hr exposure period to Viton. Effects for exposures beyond this 48-hr period is unknown. We do not warrant nor imply that the information in the chart below is accurate or complete.

Footnotes

- ¹ Satisfactory to 72°F (22°C)
² Satisfactory to 120°F (48°C)

Ratings: Chemical Effect

- A** = Excellent
B = Good, Minor Effect, Slight Corrosion or Discoloration
C = Fair, Moderate Effect, NOT Recommended for Continuous Use.
 Softens, Loss of Strength, or Swelling may occur
D = Severe Effect, NOT Recommended for ANY Use
N/A = Information Not Available

| Chemical | Compatability | Chemical | Compatability | Chemical | Compatability |
|----------------------------|---------------|----------------------------------|---------------|-------------------------------|---------------|
| Carbon Disulfide | A1-Excellent | Manganese Sulfate | A2-Excellent | Ammonium Phosphate, Monobasic | A-Excellent |
| Ethyl Benzoate | A1-Excellent | Nickel Nitrate | A2-Excellent | Ammonium Phosphate, Tribasic | A-Excellent |
| Isooctane | A1-Excellent | Petroleum | A2-Excellent | Ammonium Sulfate | A-Excellent |
| Lithium Chloride | A1-Excellent | Potassium Sulfate | A2-Excellent | Amyl Alcohol | A-Excellent |
| Mercuric Cyanide | A1-Excellent | Salt Brine (NaCl saturated) | A2-Excellent | Aniline | A-Excellent |
| Mercurous Nitrate | A1-Excellent | Sodium Cyanide | A2-Excellent | Aniline Hydrochloride | A-Excellent |
| Methyl Chloride | A1-Excellent | Sodium Sulfide | A2-Excellent | Antifreeze | A-Excellent |
| Methyl Dichloride | A1-Excellent | Sodium Sulfite | A2-Excellent | Arochlor 1248 | A-Excellent |
| Palmitic Acid | A1-Excellent | Sulfuric Acid (10-75%) | A2-Excellent | Aromatic Hydrocarbons | A-Excellent |
| Phosphorus Trichloride | A1-Excellent | Sulfuric Acid (hot concentrated) | A2-Excellent | Arsenic Salts | A-Excellent |
| Phthalic Acid | A1-Excellent | Tricresylphosphate | A2-Excellent | Asphalt | A-Excellent |
| Propylene | A1-Excellent | Acetyl Chloride (dry) | A-Excellent | Barium Carbonate | A-Excellent |
| Resorcinol | A1-Excellent | Acetylene | A-Excellent | Barium Chloride | A-Excellent |
| Salicylic Acid | A1-Excellent | Alcohols: Amyl | A-Excellent | Barium Cyanide | A-Excellent |
| Sodium Benzoate | A1-Excellent | Alcohols: Benzyl | A-Excellent | Barium Hydroxide | A-Excellent |
| Sodium Bromide | A1-Excellent | Alcohols: Butyl | A-Excellent | Barium Nitrate | A-Excellent |
| Sodium Hypochlorite (<20%) | A1-Excellent | Alcohols: Ethyl | A-Excellent | Barium Sulfate | A-Excellent |
| Sodium Hypochlorite (100%) | A1-Excellent | Alcohols: Isobutyl | A-Excellent | Barium Sulfide | A-Excellent |
| Stearic Acid | A1-Excellent | Alcohols: Isopropyl | A-Excellent | Beet Sugar Liquids | A-Excellent |
| Sulfate (Liquors) | A1-Excellent | Alcohols: Propyl | A-Excellent | Benzene | A-Excellent |
| Sulfuric Acid (75-100%) | A1-Excellent | Aluminum Chloride | A-Excellent | Benzene Sulfonic Acid | A-Excellent |
| Vinyl Acetate | A1-Excellent | Aluminum Chloride 20% | A-Excellent | Benzoic Acid | A-Excellent |
| Vinyl Chloride | A1-Excellent | Aluminum Fluoride | A-Excellent | Benzol | A-Excellent |
| Water, Deionized | A1-Excellent | Aluminum Hydroxide | A-Excellent | Bleaching Liquors | A-Excellent |
| Adipic Acid | A2-Excellent | Aluminum Potassium Sulfate 10% | A-Excellent | Borax (Sodium Borate) | A-Excellent |
| Aluminum Nitrate | A2-Excellent | Aluminum Potassium Sulfate 100% | A-Excellent | Boric Acid | A-Excellent |
| Antimony Trichloride | A2-Excellent | Aluminum Sulfate | A-Excellent | Brew ery Slop | A-Excellent |
| Benzyl Chloride | A2-Excellent | Alums | A-Excellent | Bromine | A-Excellent |
| Calcium Nitrate | A2-Excellent | Ammonium Acetate | A-Excellent | Butane | A-Excellent |
| Carbon Tetrachloride (dry) | A2-Excellent | Ammonium Bifluoride | A-Excellent | Butanol (Butyl Alcohol) | A-Excellent |
| Cupric Acid | A2-Excellent | Ammonium Carbonate | A-Excellent | Butylene | A-Excellent |
| Diethylene Glycol | A2-Excellent | Ammonium Chloride | A-Excellent | Calcium Bisulfide | A-Excellent |
| Diphenyl | A2-Excellent | Ammonium Nitrate | A-Excellent | Calcium Bisulfite | A-Excellent |
| Lead Nitrate | A2-Excellent | Ammonium Persulfate | A-Excellent | Calcium Carbonate | A-Excellent |
| Magnesium Chloride | A2-Excellent | Ammonium Phosphate, Dibasic | A-Excellent | Calcium Chlorate | A-Excellent |

| Chemical | Compatibility | Chemical | Compatibility | Chemical | Compatibility |
|---------------------------------|---------------|---------------------------------|---------------|------------------------------|---------------|
| Calcium Chloride | A-Excellent | Glucose | A-Excellent | Perchloric Acid | A-Excellent |
| Calcium Hydroxide | A-Excellent | Glycerin | A-Excellent | Perchloroethylene | A-Excellent |
| Calcium Hypochlorite | A-Excellent | Glycolic Acid | A-Excellent | Petrolatum | A-Excellent |
| Calcium Sulfate | A-Excellent | Gold Monocyanide | A-Excellent | Phenol (10%) | A-Excellent |
| Calgon | A-Excellent | Heptane | A-Excellent | Phenol (Carbolic Acid) | A-Excellent |
| Carbolic Acid (Phenol) | A-Excellent | Hexane | A-Excellent | Phosphoric Acid (>40%) | A-Excellent |
| Carbon Bisulfide | A-Excellent | Hydrobromic Acid 100% | A-Excellent | Phosphoric Acid (crude) | A-Excellent |
| Carbon Monoxide | A-Excellent | Hydrobromic Acid 20% | A-Excellent | Phosphoric Acid (S40%) | A-Excellent |
| Carbon Tetrachloride | A-Excellent | Hydrochloric Acid 100% | A-Excellent | Photographic Developer | A-Excellent |
| Carbonated Water | A-Excellent | Hydrochloric Acid 20% | A-Excellent | Phthalic Anhydride | A-Excellent |
| Carbonic Acid | A-Excellent | Hydrochloric Acid 37% | A-Excellent | Picric Acid | A-Excellent |
| Chlorinated Glue | A-Excellent | Hydrocyanic Acid | A-Excellent | Potash (Potassium Carbonate) | A-Excellent |
| Chlorine (dry) | A-Excellent | Hydrocyanic Acid (Gas 10%) | A-Excellent | Potassium Bicarbonate | A-Excellent |
| Chlorine Water | A-Excellent | Hydrofluoric Acid 20% | A-Excellent | Potassium Bromide | A-Excellent |
| Chlorine, Anhydrous Liquid | A-Excellent | Hydrofluosilicic Acid 100% | A-Excellent | Potassium Chlorate | A-Excellent |
| Chlorobenzene (Mono) | A-Excellent | Hydrofluosilicic Acid 20% | A-Excellent | Potassium Chloride | A-Excellent |
| Chlorobromomethane | A-Excellent | Hydrogen Gas | A-Excellent | Potassium Chromate | A-Excellent |
| Chocolate Syrup | A-Excellent | Hydrogen Peroxide 10% | A-Excellent | Potassium Cyanide Solutions | A-Excellent |
| Chromic Acid 30% | A-Excellent | Hydrogen Peroxide 100% | A-Excellent | Potassium Dichromate | A-Excellent |
| Chromic Acid 5% | A-Excellent | Hydrogen Peroxide 30% | A-Excellent | Potassium Ferricyanide | A-Excellent |
| Chromic Acid 50% | A-Excellent | Hydrogen Peroxide 50% | A-Excellent | Potassium Ferrocyanide | A-Excellent |
| Citric Acid | A-Excellent | Hydroxyacetic Acid 70% | A-Excellent | Potassium Iodide | A-Excellent |
| Citric Oils | A-Excellent | Iodine | A-Excellent | Potassium Nitrate | A-Excellent |
| Clorox (Bleach) | A-Excellent | Isotane | A-Excellent | Potassium Permanganate | A-Excellent |
| Copper Chloride | A-Excellent | Lead Sulfamate | A-Excellent | Potassium Sulfide | A-Excellent |
| Copper Cyanide | A-Excellent | Ligroin | A-Excellent | Propylene Glycol | A-Excellent |
| Copper Fluoborate | A-Excellent | Lubricants | A-Excellent | Pyrogallic Acid | A-Excellent |
| Copper Nitrate | A-Excellent | Magnesium Carbonate | A-Excellent | Rosins | A-Excellent |
| Copper Sulfate 5% | A-Excellent | Magnesium Hydroxide | A-Excellent | Rust Inhibitors | A-Excellent |
| Copper Sulfate>5% | A-Excellent | Magnesium Nitrate | A-Excellent | Sea Water | A-Excellent |
| Cresols | A-Excellent | Magnesium Sulfate (Epsom Salts) | A-Excellent | Shellac (Bleached) | A-Excellent |
| Cresylic Acid | A-Excellent | Maleic Acid | A-Excellent | Shellac (Orange) | A-Excellent |
| Cyanic Acid | A-Excellent | Maleic Anhydride | A-Excellent | Silicone | A-Excellent |
| Cyclohexane | A-Excellent | Malic Acid | A-Excellent | Silver Nitrate | A-Excellent |
| Detergents | A-Excellent | Melamine | A-Excellent | Soap Solutions | A-Excellent |
| Diethylamine | A-Excellent | Mercuric Chloride (dilute) | A-Excellent | Sodium Aluminate | A-Excellent |
| Diphenyl Oxide | A-Excellent | Methane | A-Excellent | Sodium Bicarbonate | A-Excellent |
| Dyes | A-Excellent | Methyl Bromide | A-Excellent | Sodium Bisulfate | A-Excellent |
| Epsom Salts (Magnesium Sulfate) | A-Excellent | Mineral Spirits | A-Excellent | Sodium Bisulfite | A-Excellent |
| Ethane | A-Excellent | Naphtha | A-Excellent | Sodium Borate (Borax) | A-Excellent |
| Ethanol | A-Excellent | Naphthalene | A-Excellent | Sodium Carbonate | A-Excellent |
| Ethyl Chloride | A-Excellent | Natural Gas | A-Excellent | Sodium Chlorate | A-Excellent |
| Ethyl Sulfate | A-Excellent | Nickel Chloride | A-Excellent | Sodium Chloride | A-Excellent |
| Ethylene Bromide | A-Excellent | Nickel Sulfate | A-Excellent | Sodium Chromate | A-Excellent |
| Ethylene Chlorohydrin | A-Excellent | Nitric Acid (20%) | A-Excellent | Sodium Ferrocyanide | A-Excellent |
| Ethylene Dichloride | A-Excellent | Nitric Acid (50%) | A-Excellent | Sodium Fluoride | A-Excellent |
| Ethylene Glycol | A-Excellent | Nitric Acid (5-10%) | A-Excellent | Sodium Hydrosulfite | A-Excellent |
| Ferric Chloride | A-Excellent | Nitric Acid (Concentrated) | A-Excellent | Sodium Metaphosphate | A-Excellent |
| Ferric Nitrate | A-Excellent | Oleum 100% | A-Excellent | Sodium Metasilicate | A-Excellent |
| Ferric Sulfate | A-Excellent | Oleum 25% | A-Excellent | Sodium Nitrate | A-Excellent |
| Ferrous Chloride | A-Excellent | Oxalic Acid (cold) | A-Excellent | Sodium Perborate | A-Excellent |
| Formaldehyde 40% | A-Excellent | Ozone | A-Excellent | Sodium Peroxide | A-Excellent |
| Gallic Acid | A-Excellent | Pentane | A-Excellent | Sodium Polyphosphate | A-Excellent |

| Chemical | Compatability | Chemical | Compatability | Chemical | Compatability |
|--------------------------------|---------------|--------------------------------------|-----------------|------------------------------|-----------------|
| Sodium Silicate | A-Excellent | Nitrobenzene | B-Good | Lacquer Thinners | D-Severe Effect |
| Sodium Sulfate | A-Excellent | Nitrous Acid | B-Good | Lacquers | D-Severe Effect |
| Sodium Tetraborate | A-Excellent | Nitrous Oxide | B-Good | Lead Acetate | D-Severe Effect |
| Sodium Thiosulfate (hypo) | A-Excellent | Paraffin | B-Good | Methyl Acetate | D-Severe Effect |
| Stannic Chloride | A-Excellent | Potassium Hydroxide (Caustic Potash) | B-Good | Methyl Acetone | D-Severe Effect |
| Stannic Fluoborate | A-Excellent | Styrene | B-Good | Methyl Acrylate | D-Severe Effect |
| Stannous Chloride | A-Excellent | Sulfuric Acid (cold concentrated) | B-Good | Methyl Butyl Ketone | D-Severe Effect |
| Sulfur Chloride | A-Excellent | Xylene | B-Good | Methyl Cellosolve | D-Severe Effect |
| Sulfur Dioxide | A-Excellent | Butyl Phthalate | C1-Fair | Methyl Ethyl Ketone | D-Severe Effect |
| Sulfur Dioxide (dry) | A-Excellent | Alcohols: Hexyl | C-Fair | Methyl Ethyl Ketone Peroxide | D-Severe Effect |
| Sulfur Trioxide | A-Excellent | Alcohols: Methyl | C-Fair | Methyl Isobutyl Ketone | D-Severe Effect |
| Sulfur Trioxide (dry) | A-Excellent | Dichlorobenzene | C-Fair | Methyl Isopropyl Ketone | D-Severe Effect |
| Sulfuric Acid (<10%) | A-Excellent | Dichloroethane | C-Fair | Methyl Methacrylate | D-Severe Effect |
| Sulfurous Acid | A-Excellent | Dimethyl Formamide | C-Fair | Methylamine | D-Severe Effect |
| Tannic Acid | A-Excellent | Ether | C-Fair | Monoethanolamine | D-Severe Effect |
| Tartaric Acid | A-Excellent | Fluorine | C-Fair | Mustard | D-Severe Effect |
| Tetrachloroethane | A-Excellent | Formic Acid | C-Fair | Nitromethane | D-Severe Effect |
| Tetrachloroethylene | A-Excellent | Magnesium Oxide | C-Fair | Pyridine | D-Severe Effect |
| Trichloroethane | A-Excellent | Methanol (Methyl Alcohol) | C-Fair | Sodium Acetate | D-Severe Effect |
| Trichloroethylene | A-Excellent | Methyl Alcohol 10% | C-Fair | Sodium Hydroxide (50%) | D-Severe Effect |
| Trichloropropane | A-Excellent | Monochloroacetic acid | C-Fair | Sodium Hydroxide (80%) | D-Severe Effect |
| Trisodium Phosphate | A-Excellent | Sodium Hydroxide (20%) | C-Fair | Tetrahydrofuran | D-Severe Effect |
| Turpentine | A-Excellent | Toluene (Toluol) | C-Fair | Triethylamine | D-Severe Effect |
| Urea | A-Excellent | Trichloroacetic Acid | C-Fair | Acetyl Bromide | N/A |
| Varnish | A-Excellent | Acetaldehyde | D-Severe Effect | Ammonium Caseinate | N/A |
| Water, Acid, Mine | A-Excellent | Acetate Solvent | D-Severe Effect | Ammonium Oxalate | N/A |
| Water, Distilled | A-Excellent | Acetic Acid, Glacial | D-Severe Effect | Ammonium Thiosulfate | N/A |
| Water, Fresh | A-Excellent | Acetic Anhydride | D-Severe Effect | Benzonitrile | N/A |
| Water, Salt | A-Excellent | Acetone | D-Severe Effect | Calcium Bisulfate | N/A |
| Weed Killers | A-Excellent | Acrylonitrile | D-Severe Effect | Carbon Tetrachloride (w et) | N/A |
| Zinc Chloride | A-Excellent | Alcohols: Diacetone | D-Severe Effect | Chloric Acid | N/A |
| Zinc Sulfate | A-Excellent | Amines | D-Severe Effect | Chromium Salts | N/A |
| Amyl Chloride | B1-Good | Ammonia 10% | D-Severe Effect | Hydrochloric Acid, Dry Gas | N/A |
| Butyric Acid | B1-Good | Ammonia Nitrate | D-Severe Effect | Iodine (in alcohol) | N/A |
| Fluosilicic Acid | B1-Good | Ammonia, anhydrous | D-Severe Effect | Iodoform | N/A |
| Linoleic Acid | B1-Good | Ammonia, liquid | D-Severe Effect | Lithium Hydroxide | N/A |
| Lye: Ca(OH)2 Calcium Hydroxide | B1-Good | Ammonium Sulfite | D-Severe Effect | Magnesium Bisulfate | N/A |
| Lye: NaOH Sodium Hydroxide | B1-Good | Amyl Acetate | D-Severe Effect | Morpholine | N/A |
| Acetamide | B-Good | Benzaldehyde | D-Severe Effect | Nitrating Acid (<15% HNO3) | N/A |
| Acetic Acid | B-Good | Butyl Amine | D-Severe Effect | Nitrating Acid (>15% H2SO4) | N/A |
| Acetic Acid 20% | B-Good | Butyl Ether | D-Severe Effect | Nitrating Acid (S1% Acid) | N/A |
| Acetic Acid 80% | B-Good | Butylacetate | D-Severe Effect | Nitrating Acid (S15% H2SO4) | N/A |
| Alcohols: Octyl | B-Good | Chloroacetic Acid | D-Severe Effect | Nitrogen Fertilizer | N/A |
| Ammonium Hydroxide | B-Good | Chlorosulfonic Acid | D-Severe Effect | Phosphoric Acid (molten) | N/A |
| Aqua Regia (80% HCl, 20% HNO3) | B-Good | Cyclohexanone | D-Severe Effect | Phosphoric Acid Anhydride | N/A |
| Butadiene | B-Good | Diacetone Alcohol | D-Severe Effect | Phosphorus | N/A |
| Calcium Oxide | B-Good | Diethyl Ether | D-Severe Effect | Potassium Hypochlorite | N/A |
| Carbon Dioxide (dry) | B-Good | Dimethyl Aniline | D-Severe Effect | Potassium Oxalate | N/A |
| Carbon Dioxide (w et) | B-Good | Ethanolamine | D-Severe Effect | Sodium Hyposulfate | N/A |
| Chromic Acid 10% | B-Good | Ethyl Acetate | D-Severe Effect | Sulfur Hexafluoride | N/A |
| Ethylene Chloride | B-Good | Ethyl Ether | D-Severe Effect | Sulfuryl Chloride | N/A |
| Ethylene Diamine | B-Good | Ethylene Oxide | D-Severe Effect | Uric Acid | N/A |
| Ferrous Sulfate | B-Good | Formaldehyde 100% | D-Severe Effect | Zinc Hydrosulfite | N/A |
| Fluoboric Acid | B-Good | Furan Resin | D-Severe Effect | | |
| Hydrofluoric Acid 100% | B-Good | Furfural | D-Severe Effect | | |
| Hydrofluoric Acid 50% | B-Good | Hydrogen Sulfide (aqua) | D-Severe Effect | | |
| Hydrofluoric Acid 75% | B-Good | Hydrogen Sulfide (dry) | D-Severe Effect | | |
| Hydroquinone | B-Good | Isopropyl Acetate | D-Severe Effect | | |
| Lye: KOH Potassium Hydroxide | B-Good | Isopropyl Ether | D-Severe Effect | | |
| Methylene Chloride | B-Good | Ketones | D-Severe Effect | | |

Additional Option

J1207 - Drift Guard

The Drift Guard is used to prevent chemicals from drifting during windy conditions. It is ideal to use to cover large areas during windy conditions. The Drift Guard can be easily adapted to the end of your Sprayer Wand. See the Figure below.



The Drift Guard P#(J1207) is available for purchase, please contact New PECO, Inc. to request more info or to place an order.



New PECO, Inc.
10 Walden Dr | Arden, North Carolina 28704
Phone: 1-800-438-5823 | 828-684-1234
Fax: 828-684-0858
Email: peco@lawnvac.com
Website: www.lawnvac.com