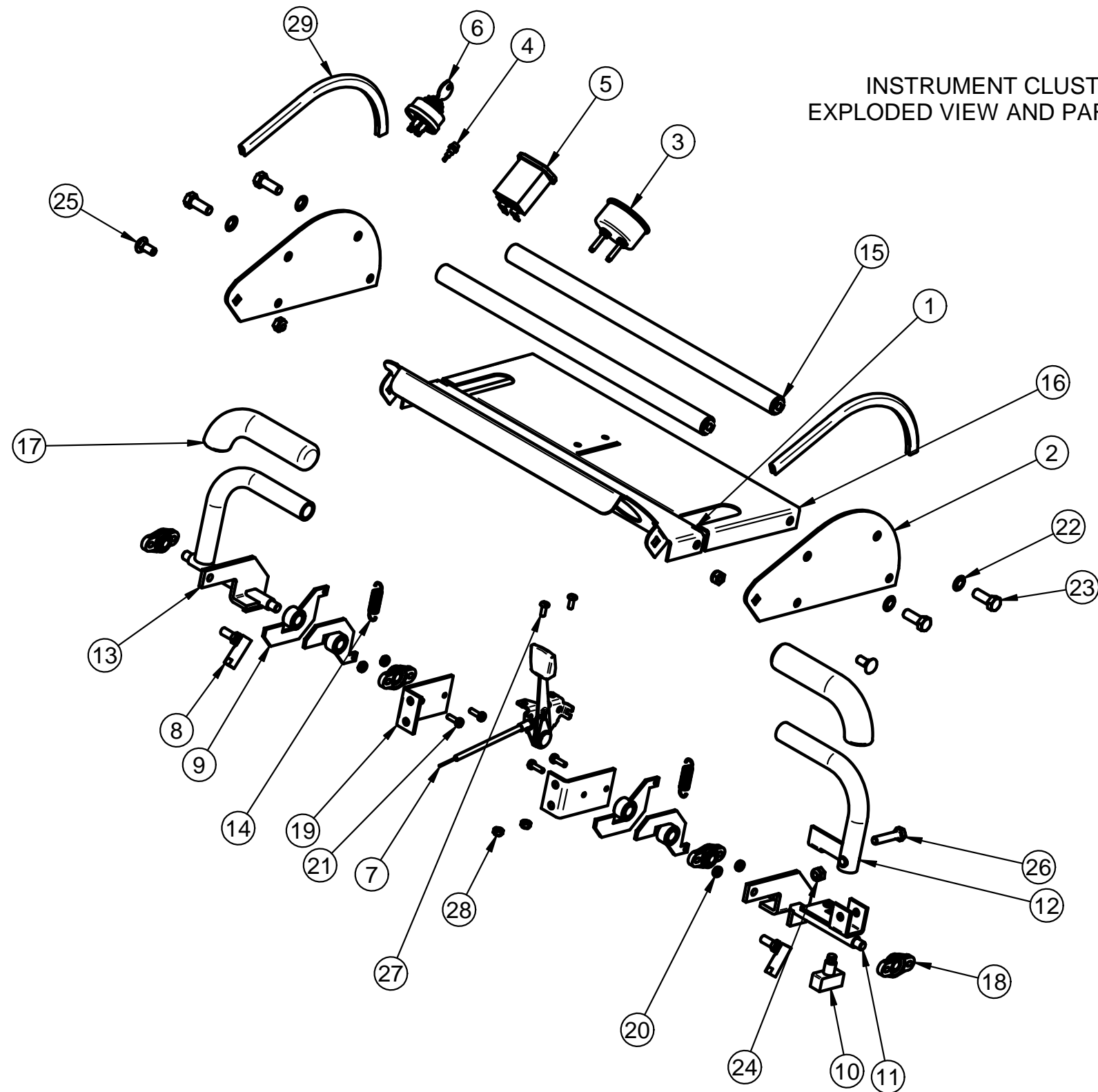


Item#	Part#	Title	Quantity
1	TBB2-0034	GAGE DASH PANEL	1
2	TBB2-0035	DASH PANEL GUARD	2
3	P0081	AMP METER	1
4	P0119	ENGINE LED LIGHT	1
5	P0164	SENDEC HOUR METER	1
6	P0183	KEY SWITCH	1
7	J0262	THROTTLE CABLE	1
8	K1442	BALL JOINT 5/16"-24 RH THD.	2
9	FRSA-001	PIVOT BRKT. ASSY.	4
10	P0082	OPS SWITCH	1
11	FRSA-003	FRS OPS SHAFT ASSY.	1
12	FRSA-004	FRS OPS HANDLE ASSY.	1
13	FRSA-002	FRS HANDLE ASSY.	1
14	J0280	FRS SPRING	2
15	TBB2-0048	FRS GRAB BAR ASSY.	2
16	TBB2-0049	CONTROL DASH PANEL	1
17	J0281	BLACK GRIP .840 ID x 6 L x .187 WALL	2
18	N0155	FLANGE MNT. BRG.	4
19	FRS-011	FRS MNT. BRKT.	2
20	K0394	10-24 HEX NUT WITH SERRATED WASHER	4
21	K0393	10-24 x 5/8" HWHSMS	4
22	K0049	5/16" INTERNAL LOCK WASHER	4
23	K1191	3/8"-16 x 1" HHCS	4
24	K1180	5/16"-18 NYLOC NUT	4
25	K1142	5/16"-18 x 3/4" CARRIAGE BOLT	2
26	K1157	5/16"-18 x 1-1/2" ALL THREAD HHCS	1
27	K1064	10-24 x 1/2" PSLMS	2
28	K1068	10-24 NYLOC NUT	2
29	V0013	DASH PANEL GUARD COVER	2



REVISIONS:	NEXT RT:	CUT SIZE:	#: <b>TBB-3000</b>	
	RT: OPER: LOC:	REQUIRED:		DESC: INSTRUMENT CLUSTER
	1 *	MTL:		DATE: 2/1/2007 SHEET 1 OF 1
	2 *	USED ON:		REV: MODIFIED DATE: 3/22/2008
	3 *	TYPE/MODEL: BRUSH BLAZER		WEIGHT: N/A
4 *	*	UNLESS OTHERWISE SPECIFIED	DRAWN BY: Patrick	
5 *		ANGLES ±0.5° 2 PL ±0.010 3 PL ±0.005	APPR BY: <b>PECO</b>	
LOCATION:	UNITS: INCH			